

# Adaptec Ultra Wireless™ for Notebooks

## **User's Guide**

## **Copyright**

© 2002 Adaptec, Inc. All rights reserved. No part of this publication may be reproduced, stored in a retrieval system, or transmitted in any form or by any means, electronic, mechanical, photocopying, recording or otherwise, without the prior written consent of Adaptec, Inc., 691 South Milpitas Blvd., Milpitas, CA 95035.

## **Trademarks**

Adaptec, the Adaptec logo, and Ultra Wireless are trademarks of Adaptec, Inc., which may be registered in some jurisdictions.

Windows 98SE, Windows Me, Windows 2000, and Windows XP, are trademarks of Microsoft Corporation in the US and other countries, used under license.

All other trademarks are the property of their respective owners.

## **Changes**

The material in this document is for information only and is subject to change without notice. While reasonable efforts have been made in the preparation of this document to assure its accuracy, Adaptec, Inc. assumes no liability resulting from errors or omissions in this document, or from the use of the information contained herein.

Adaptec reserves the right to make changes in the product design without reservation and without notification to its users.

## **Disclaimer**

IF THIS PRODUCT DIRECTS YOU TO COPY MATERIALS, YOU MUST HAVE PERMISSION FROM THE COPYRIGHT OWNER OF THE MATERIALS TO AVOID VIOLATING THE LAW WHICH COULD RESULT IN DAMAGES OR OTHER REMEDIES.

## Adaptec Technical Support

If you have questions about installing or using your Adaptec product, check this document first—you will find answers to most of your questions here. If you need further assistance, use the support options listed below.

### Technical Support Identification (TSID) Number

- Before contacting Technical Support, you need your unique 12-digit TSID number. The TSID number identifies your product and support status.
- The TSID number is included on two white, bar-coded labels, like the example below.



### Support Options

- Search the Adaptec Support Knowledgebase (ASK) at [ask.adaptec.com](http://ask.adaptec.com) for articles, troubleshooting tips, and frequently asked questions for your product.
- For support via Email, submit your question to Adaptec's Technical Support Specialists at [ask.adaptec.com](mailto:ask.adaptec.com).
- To order Adaptec products, including accessories and cables, call +1 408-957-7274. Or, you can order cables online at [www.adaptec.com/buy-cables](http://www.adaptec.com/buy-cables).

### Europe

- Visit our Web site at [www.adaptec-europe.com](http://www.adaptec-europe.com).
- **German and English:** Search the Adaptec Support Knowledgebase (ASK) at [ask-de.adaptec.com](http://ask-de.adaptec.com) for articles, troubleshooting tips, and frequently asked questions for your product.  
For support via e-mail, submit your question to Adaptec's Technical Support Specialists at [ask-de.adaptec.com](mailto:ask-de.adaptec.com).
- **French:** Search the Adaptec Support Knowledgebase (ASK) at [ask-fr.adaptec.com](http://ask-fr.adaptec.com) for articles, troubleshooting tips, and frequently asked questions for your product.  
For support via e-mail, submit your question to Adaptec's Technical Support Specialists at [ask-fr.adaptec.com](mailto:ask-fr.adaptec.com).
- To order Adaptec products, including accessories and cables, go to [www.adaptec.com/buy-cables](http://www.adaptec.com/buy-cables).

### Australia and New Zealand

- Visit our Web site at [www.adaptec.com.au](http://www.adaptec.com.au).
- For support via e-mail, submit your question to Adaptec's Technical Support Specialists at [ask.adaptec.com](mailto:ask.adaptec.com).

### Hong Kong and China

- Visit our Web site at [www.adaptec.com](http://www.adaptec.com).
- Fax Technical Support at +852 2869 7100.

### Singapore

- Visit our Web site at [www.adaptec.com](http://www.adaptec.com).

### Japan

- Search the Adaptec Support Knowledgebase (ASK) at [ask.adaptec.co.jp](http://ask.adaptec.co.jp)
- Visit our Web site at [www.adaptec.co.jp](http://www.adaptec.co.jp).

## Limited 2-Year Hardware Warranty

1. Adaptec, Inc. ("Adaptec") warrants to the purchaser of this product that it will be free from defects in material and workmanship for a period of two (2) years from the date of purchase. If the product should become defective within the warranty period, Adaptec, at its option, will repair or replace the product, or refund the purchaser's purchase price for the product, provided it is delivered at the purchaser's expense to an authorized Adaptec service facility or to Adaptec.
2. Repair or replacement parts or products will be furnished on an exchange basis and will either be new or reconditioned. All replaced parts or products shall become the property of Adaptec. This warranty shall not apply if the product has been damaged by accident, misuse, abuse or as a result of unauthorized service or parts.
3. Warranty service is available to the purchaser by delivering the product during the warranty period to an authorized Adaptec service facility or to Adaptec and providing proof of purchase price and date. The purchaser shall bear all shipping, packing and insurance costs and all other costs, excluding labor and parts, necessary to effectuate repair, replacement or refund under this warranty.
4. For more information on how to obtain warranty service, write or telephone Adaptec at 691 South Milpitas Boulevard, Milpitas, CA 95035, (800) 959-7274.
5. THIS LIMITED WARRANTY DOES NOT EXTEND TO ANY PRODUCT WHICH HAS BEEN DAMAGED AS A RESULT OF ACCIDENT, MISUSE, ABUSE, OR AS A RESULT OF UNAUTHORIZED SERVICE OR PARTS.
6. THIS WARRANTY IS IN LIEU OF ALL OTHER EXPRESS WARRANTIES WHICH NOW OR HEREAFTER MIGHT OTHERWISE ARISE RESPECT TO THIS PRODUCT. IMPLIED WARRANTIES, INCLUDING THOSE OF MERCHANTABILITY, FITNESS FOR A PARTICULAR PURPOSE AND NON-INFRINGEMENT SHALL (A) HAVE NO GREATER DURATION THAN 2 YEARS FROM THE DATE OF PURCHASE, (B) TERMINATE AUTOMATICALLY AT THE EXPIRATION OF SUCH PERIOD AND (C) TO THE EXTENT PERMITTED BY LAW BE EXCLUDED. IN THE EVENT THIS PRODUCT BECOMES DEFECTIVE DURING THE WARRANTY PERIOD, THE PURCHASER'S EXCLUSIVE REMEDY SHALL BE REPAIR, REPLACEMENT OR REFUND AS PROVIDED ABOVE. INCIDENTAL OR CONSEQUENTIAL DAMAGES, INCLUDING WITHOUT LIMITATION LOSS OF DATA, ARISING FROM BREACH OF ANY EXPRESS OR IMPLIED WARRANTY ARE NOT THE RESPONSIBILITY OF ADAPTEC AND, TO THE EXTENT PERMITTED BY LAW, ARE HEREBY EXCLUDED BOTH FOR PROPERTY DAMAGE, AND TO THE EXTENT NOT UNCONSCIONABLE, FOR PERSONAL INJURY DAMAGE.
7. SOME STATES DO NOT ALLOW THE EXCLUSION OR LIMITATION OF INCIDENTAL OR CONSEQUENTIAL DAMAGES FOR CONSUMER PRODUCTS, AND SOME STATES DO NOT ALLOW LIMITATIONS ON HOW LONG AN IMPLIED WARRANTY LASTS, SO THE ABOVE LIMITATION OR EXCLUSIONS MAY NOT APPLY TO YOU.
8. This warranty gives you specific legal rights, and you may also have other rights which vary from state to state.

## Adaptec Software License Agreement

PLEASE READ CAREFULLY: THE USE OF THIS SOFTWARE IS SUBJECT TO THE SOFTWARE LICENSE TERMS OF ADAPTEC, INC. AND OTHER LICENSORS WHOSE SOFTWARE MAY BE BUNDLED WITH THIS PRODUCT.

BY YOUR USE OF THE SOFTWARE INCLUDED WITH THIS PRODUCT YOU AGREE TO THE LICENSE TERMS REQUIRED BY THE LICENSOR OF THAT SOFTWARE, AS SET FORTH DURING THE INSTALLATION PROCESS. IF YOU DO NOT AGREE TO THE LICENSE TERMS APPLICABLE TO THE SOFTWARE, YOU MAY RETURN THE ENTIRE UNUSED PRODUCT FOR A FULL REFUND.

In return for acquiring a license to use the Adaptec software ("Software") and the related documentation, you agree to the following terms and conditions:

1. License. This Agreement grants you, the Licensee, a license to:
  - a. Use the Software on a single computer system or on multiple workstations, systems and servers which incorporate an Adaptec RAID controller and may be accessed by multiple users from multiple locations. You may make as many installations of the Software as needed, but must restrict such installation only to systems, workstations or servers using an Adaptec RAID controller.
  - b. Make one copy of the Software in machine readable form solely for back-up purposes provided you reproduce Adaptec's copyright notice and any proprietary legends.
2. Restrictions. You may not distribute copies of the Software to others. You may not post or otherwise make available the Software, or any portion thereof, in any form, on the Internet. You may not use the Software in a computer service business, including in time sharing applications. The Software contains trade secrets and, in order to protect them, you may not decompile, reverse engineer, disassemble, or otherwise reduce the Software to a human-perceivable form. YOU MAY NOT MODIFY, ADAPT, TRANSLATE, RENT, LEASE, LOAN, RESELL FOR PROFIT, DISTRIBUTE, NETWORK OR CREATE DERIVATIVE WORKS BASED UPON THE SOFTWARE OR ANY PART THEREOF.
3. Ownership of Software. As Licensee, you own the media upon which the software is recorded or fixed, but Adaptec and its licensors retain title and ownership of the Software recorded on the original media and all subsequent copies of the Software, regardless of the form or media in which or on which the original and other copies may exist. This license is not a sale of the Software or any copy.
4. Confidentiality. You agree to maintain the Software in confidence and that you will not disclose the Software to any third party without the express written consent of Adaptec. You further agree to take all reasonable precautions to preclude access of unauthorized persons to the Software.
5. Term. This license is effective until January 1, 2045, unless terminated earlier. You may terminate the license at any time by destroying the Software (including the related documentation) together with all copies or modifications in any form. Adaptec will have the right to terminate our license immediately if you fail to comply with any term or condition of this Agreement. Upon any termination, including termination by you, you must destroy the Software (including the related documentation), together with all copies or modifications in any form.
6. Special Terms Applicable to Databases. Where a database is included with the Software, you acknowledge that it is licensed only in connection with the use of the Software to perform disc creation, and that the database and all data derived therefrom must be maintained in confidence in accordance with the provisions of Section 4. This license does not grant you any rights to distribute or disclose such database or data.

7. Limited Warranty. Adaptec and its Licensor warrant only that the media upon which the Software is furnished will be free from defects in material or workmanship under normal use and service for a period of thirty (30) days from the date of delivery to you. ADAPTEC AND ITS LICENSORS DO NOT AND CANNOT WARRANT THE PERFORMANCE OR RESULTS YOU MAY OBTAIN BY USING THE SOFTWARE OR DOCUMENTATION. THE FOREGOING STATES THE SOLE AND EXCLUSIVE REMEDIES ADAPTEC AND ITS LICENSORS WILL PROVIDE FOR BREACH OF WARRANTY. EXCEPT FOR THE FOREGOING LIMITED WARRANTY, ADAPTEC AND ITS LICENSORS MAKE NO WARRANTIES, EXPRESSED OR IMPLIED, INCLUDING, BUT NOT LIMITED, AS TO NON-INFRINGEMENT OF THIRD PARTY RIGHTS, MERCHANTABILITY OR FITNESS FOR A PARTICULAR PURPOSE. Some states do not allow the exclusion of implied warranties or limitations on how long an implied warranty may last, so the above limitations may not apply to you. This warranty gives you specific legal rights and you may also have other rights which vary from state to state.
8. The entire liability of Adaptec and its licensors, and your exclusive remedy for a breach of this warranty, shall be:
  - a. The replacement of any media not meeting the above limited warranty which is returned to Adaptec; or:
  - b. If Adaptec or its distributor is unable to deliver replacement media which is free from defects in materials or workmanship, you may terminate this Agreement by returning the Software and your money will be refunded.
9. Limitation of Liability. IN NO EVENT WILL ADAPTEC OR ITS LICENSORS BE LIABLE TO YOU FOR ANY INCIDENTAL, CONSEQUENTIAL OR INDIRECT DAMAGES, INCLUDING ANY LOST PROFITS, LOST SAVINGS, OR LOSS OF DATA, EVEN IF ADAPTEC OR A LICENSOR HAS BEEN ADVISED OF THE POSSIBILITY OF SUCH DAMAGES, OR FOR ANY CLAIM BY ANY OTHER PARTY. Some states do not allow the exclusion or limitation of special, incidental, or consequential damages, so the above limitation or exclusion may not apply to you.
10. Export. You acknowledge that the laws and regulations of the United States and other countries may restrict the export and re-export of the Software. You agree that you will not export or re-export the Software or documentation in any form in violation of applicable United States and foreign law.
11. Government Restricted Rights. The Software is subject to restricted rights as follows. If the Software is acquired under the terms of a GSA contract: use, reproduction or disclosure is subject to the restrictions set forth in the applicable ADP Schedule contract. If the Software is acquired under the terms of a DoD or civilian agency contract, use, duplication or disclosure by the Government is subject to the restrictions of this Agreement in accordance with 48 C.F.R. 12.212 of the Federal Acquisition Regulations and its successors and 49 C.F.R. 227.7202-1 of the DoD FAR Supplement and its successors.
12. General. You acknowledge that you have read this Agreement, understand it, and that by using the Software you agree to be bound by its terms and conditions. You further agree that it is the complete and exclusive statement of the agreement between Adaptec and you, and supersedes any proposal or prior agreement, oral or written, and any other communication between Adaptec and you relating to the subject matter of this Agreement. No additional or any different terms will be enforceable against Adaptec unless Adaptec gives its express consent, including an express waiver of the terms of this Agreement, in writing signed by an officer of Adaptec. You assume full responsibility for the use of the Software and agree to use the Software legally and responsibly. This Agreement shall be governed by California law, except as to copyright matters, which are covered by Federal law. This Agreement is deemed entered into at Milpitas, California by both parties. Should any provision of this Agreement be declared unenforceable in any jurisdiction, then such provision shall be deemed severable from this Agreement and shall not affect the remainder hereof. All rights in the Software not specifically granted in this Agreement are reserved by Adaptec.

Should you have any questions concerning this Agreement, you may contact Adaptec by writing to:

Adaptec, Inc.  
Legal Department  
691 South Milpitas Boulevard  
Milpitas, California 95035.

## Regulatory Compliance Statements

### Federal Communications Commission Radio Frequency Interference Statement

WARNING: Changes or modifications to this unit not expressly approved by the party responsible for compliance could void the user's authority to operate the equipment.

This equipment has been tested and found to comply with the limits for a Class B digital device, pursuant to Part 15 of the FCC rules. These limits are designed to provide reasonable protection against harmful interference in a residential installation. This equipment generates, uses, and can radiate radio frequency energy, and if not installed and used in accordance with the instructions, may cause harmful interference to radio communications. However, there is no guarantee that interference will not occur in a particular installation. If this equipment does cause harmful interference to radio or television reception, which can be determined by turning the equipment off and on, the user is encouraged to try to correct the interference by one or more of the following measures:

- Reorient or relocate the receiving antenna.
- Increase the separation between equipment and receiver.
- Connect the equipment to an outlet on a circuit different from that to which the receiver is connected.
- Consult the dealer or an experienced radio/television technician for help.

You are cautioned that changes or modifications not expressly approved by the part responsible for compliance could void your authority to operate the equipment.



### Federal Communications Commission (FCC) Radiation Exposure Statement

This equipment complies with FCC radiation exposure limits set forth for an uncontrolled environment.

This equipment should be installed and operated with a minimum distance of 20 cm between the radiator and your body.



### CE Mark Warning

This is a Class B product. In a domestic environment, this product may cause radio interference, in which case the user may be required to take adequate measures.

This transmitter must not be co-located or operated in conjunction with any other antenna or transmitter.



### Canadian Compliance Statement

This Class B digital apparatus meets all requirements of the Canadian Interference-Causing Equipment Regulations.

Cet appareil numérique de la classe B respecte toutes les exigences du Règlement sur le matériel brouilleur du Canada.

## **In this Guide**

Getting Started	2
Installation Task List	3
Installing the Wireless PC Card	4
Installing the Device Driver	6
Installing the Adaptec Wireless Utility	17
Disabling Zero Configuration (Windows XP only)	21
Installing Network Protocols	23
Connecting to the WLAN	27
Checking Your Network Connection	30
Changing the Set-up of Your WLAN	31
Troubleshooting	40
About Wireless Technology and LANs	42
Technical Specifications	44
Glossary	45



# Getting Started

This *User's Guide* provides detailed instructions for installing and configuring the Adaptec AWN-8030 Ultra Wireless for Notebooks PC Card. See the [Installation Task List on page 3](#) for an overview of the installation process.

This *Guide* also includes a basic overview of wireless and Local Area Network (LAN) technology (see [page 42](#)) suitable for novice users. It assumes you have a working knowledge of your computer and are familiar with the Windows Operating System.



---

**Note:** Your Wireless PC Card is only one element of your Wireless LAN (WLAN). Installing this product alone will not create a wireless network. See [About Wireless Technology and LANs on page 42](#) for information on the minimum requirements for creating a WLAN.

---

## Kit Contents

- Adaptec AWN-8030 Ultra Wireless for Notebooks PC Card
- Ultra Wireless for Notebooks CD, which includes software drivers, documentation, and the Adaptec Wireless Utility.
- *Ultra Wireless for Notebooks Quick Start Guide*

## System Requirements

To use your Wireless PC Card, you need a PC-compatible notebook computer with:

- Pentium-class 90 MHz (or faster) processor
- Microsoft Windows<sup>®</sup> 98SE, Windows Me<sup>®</sup>, Windows 2000<sup>®</sup>, or Windows XP<sup>®</sup>
- CD-ROM drive
- Available PC card slot

# Installation Task List

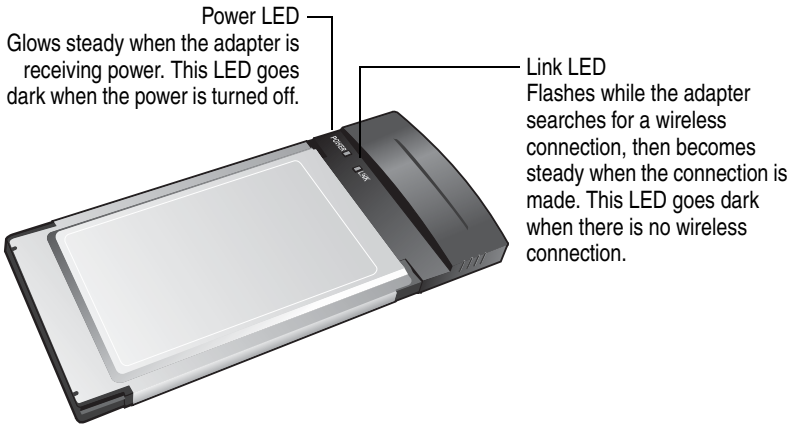
To successfully install your Wireless PC Card, complete each of these tasks, in order:

- If you are unfamiliar with wireless technology or LANs, read [About Wireless Technology and LANs on page 42](#) for a basic overview.
- Install the Wireless PC Card. See [page 4](#).
- Install the device driver for your computer's operating system. See [page 6](#).
- Install the Adaptec Wireless Utility. See [page 17](#).
- Disable Zero Configuration (*Windows XP users only*). See [page 21](#).
- Install the network protocols. See [page 23](#).
- Connect to the WLAN. See [page 27](#).

Installation takes approximately 15 minutes to complete.

# Installing the Wireless PC Card

Your Wireless PC Card, shown below, has a 68-pin connector that attaches to the PC card port of your notebook computer, and two LEDs that help you monitor the status of your wireless connection.



To install the Wireless PC Card, slide it into your notebook's PC card slot until it is fully seated.



---

**Note:** Refer to your computer's documentation for more detailed installation instructions, if necessary.

---

## Removing the Wireless PC Card

Your Wireless PC Card is *hot-swappable*, which means that you can remove it while your computer is running.



**Caution:** To prevent data loss, stop all data transmission before you remove the Wireless PC Card.

---

To remove the Wireless PC Card:

- 1 Stop the Wireless PC Card, using the **Stop or Remove** icon in your system tray. (Refer to your Windows documentation for instructions, if necessary.)
- 2 Remove the Wireless PC Card from your computer.

# Installing the Device Driver

Before you continue, ensure that you have:

- ❑ Reviewed [About Wireless Technology and LANs on page 42](#) for a basic overview of WLANs.
- ❑ Installed the Wireless PC Card. See [page 4](#).

The next step on the Installation Task List ([page 3](#)) is to install the *device driver*. A device driver is a software program that lets your adapter communicate with your computer.

To install the device driver, follow the instructions for your operating system:

- For Windows XP, see [page 7](#).
- For Windows 2000, see [page 9](#).
- For Windows Me, see [page 12](#).
- For Windows 98SE, see [page 14](#).

# Windows XP Driver Installation

To install the device driver on Windows XP:

- 1 Install the Wireless PC Card into your computer. See [page 4](#). Power on your computer, if it isn't already running.

Windows XP automatically detects the Wireless PC Card and opens the Found New Hardware Wizard.

- 2 Insert the Ultra Wireless for Notebooks CD into your CD-ROM drive.
- 3 In the Found New Hardware Wizard, select **Install the software automatically...**, then click **Next**.

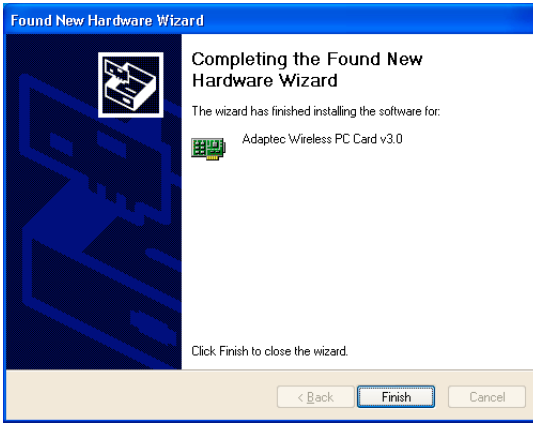


- 4 Click **Continue Anyway**.



Windows XP installs the driver.

5 Click **Finish**.



The device driver installation is complete.

Windows XP automatically begins the next installation task by opening the software installation wizard for the Adaptec Wireless Utility. Go to [Installing the Adaptec Wireless Utility on page 17](#) to continue.

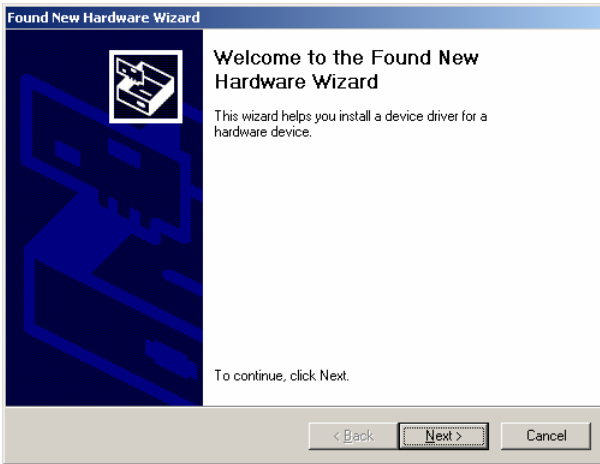
# Windows 2000 Driver Installation

To install the device driver on Windows 2000:

- 1 Install the Wireless PC Card into your computer. See [page 4](#). Power on your computer, if it isn't already running.

Windows 2000 automatically detects the Wireless PC Card and opens the Found New Hardware Wizard.

- 2 Click **Next**.

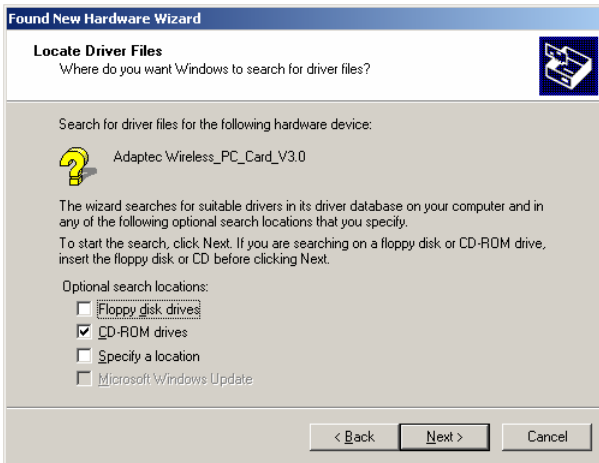


- 3 Select **Search for a suitable driver...**, then click **Next**.

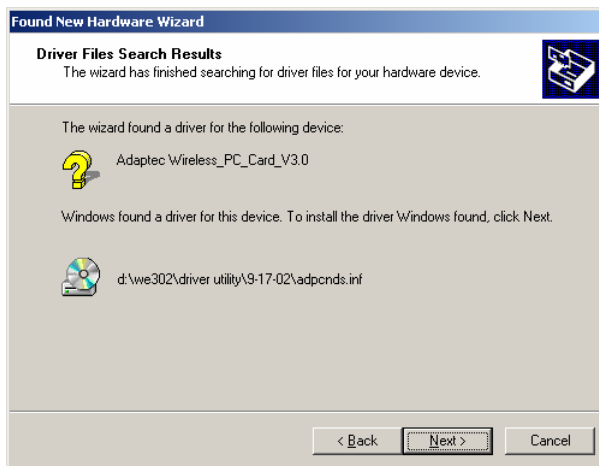




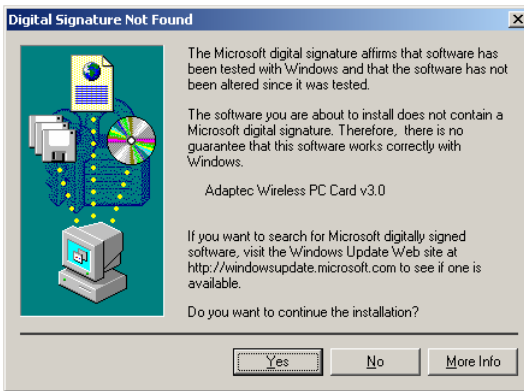
- 4 Insert the Adaptec Ultra Wireless for Notebooks CD into your CD-ROM drive.
- 5 Select **CD-ROM driver**, then click **Next**.



- 6 Click **Next**.



7 Click Yes.



8 Click Finish.



The device driver installation is complete.

Windows 2000 automatically begins the next installation task by opening the software installation wizard for the Adaptec Wireless Utility. Go to *Installing the Adaptec Wireless Utility on page 17* to continue.

## Windows Me Driver Installation

To install the device driver on Windows Me:

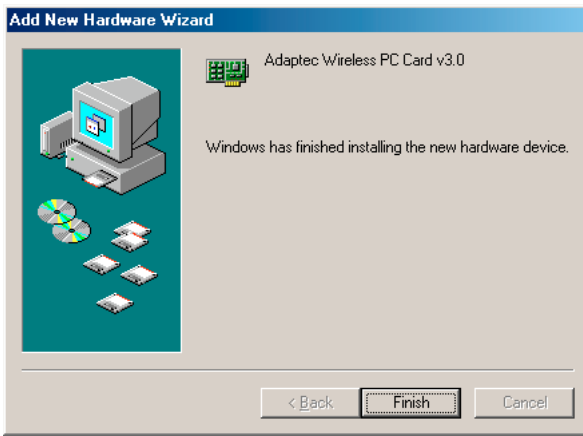
- 1 Install the Wireless PC Card into your computer. See [page 4](#). Power on your computer, if it isn't already running.

Windows Me automatically detects the Wireless PC Card and opens the Add New Hardware Wizard.

- 2 Insert the Ultra Wireless for Notebooks CD into your CD-ROM drive.
- 3 Select **Automatic search for a better driver...**, then click **Next**.



**4 Click Finish.**



**5 Click Yes to restart your computer.**

When the restart is complete, Windows Me automatically begins the next installation task by opening the software installation wizard for the Adaptec Wireless Utility. Go to [Installing the Adaptec Wireless Utility on page 17](#) to continue.

## Windows 98SE Driver Installation

To install the device driver on Windows 98SE:

- 1 Install the Wireless PC Card into your computer. See [page 4](#). Power on your computer, if it isn't already running.

Windows 98SE automatically detects the Wireless PC Card and opens the Add New Hardware Wizard.

- 2 Click **Next**.



- 3 Select **Search for the best driver...**, then click **Next**.



- 4 Insert the Ultra Wireless for Notebooks CD into your CD-ROM drive.
- 5 Select **CD-ROM drive**, then click **Next**.



- 6 Click **Next**.

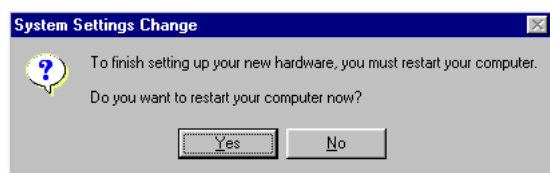


Windows 98SE copies files to your hard drive.

**7** Click **Finish**.



**8** Click **Yes** to restart your computer.



When the restart is complete, Windows 98SE automatically begins the next installation task by opening the software installation wizard for the Adaptec Wireless Utility. Go to [Installing the Adaptec Wireless Utility on page 17](#) to continue.

# Installing the Adaptec Wireless Utility

Before you continue, make sure that you have:

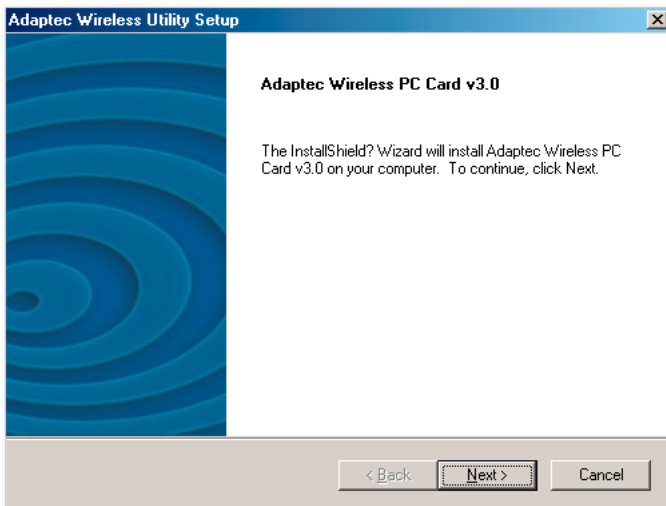
- Reviewed [About Wireless Technology and LANs on page 42](#) for a basic overview of WLANs.
- Installed the Wireless PC Card. See [page 4](#).
- Installed the device driver. See [page 6](#).

The next step on the Installation Task List (see [page 3](#)) is to install the Adaptec Wireless Utility, a software application that helps you configure your Wireless PC Card.

When the device driver installation is complete, Windows automatically opens InstallShield, an installation wizard that will help you install the Adaptec Wireless Utility.

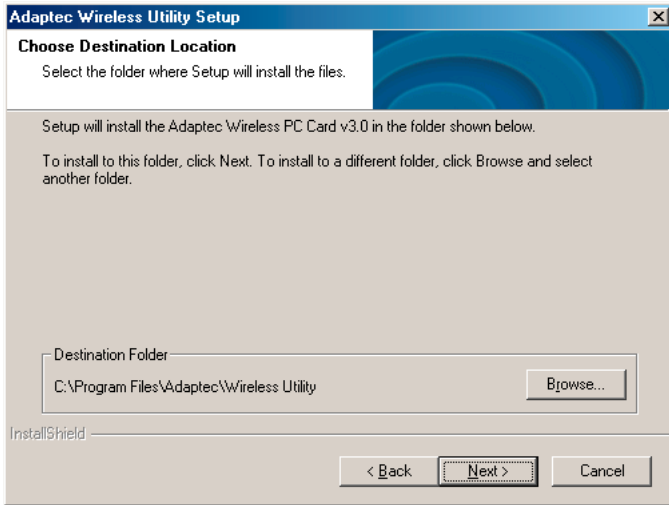
To complete the software installation:

- 1 Click **Next**.

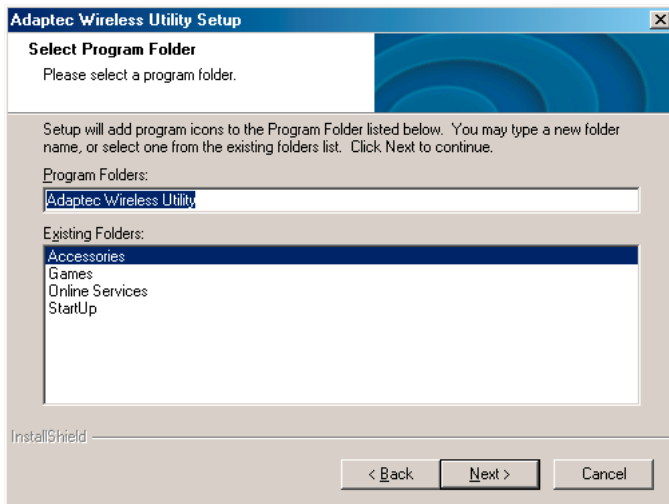




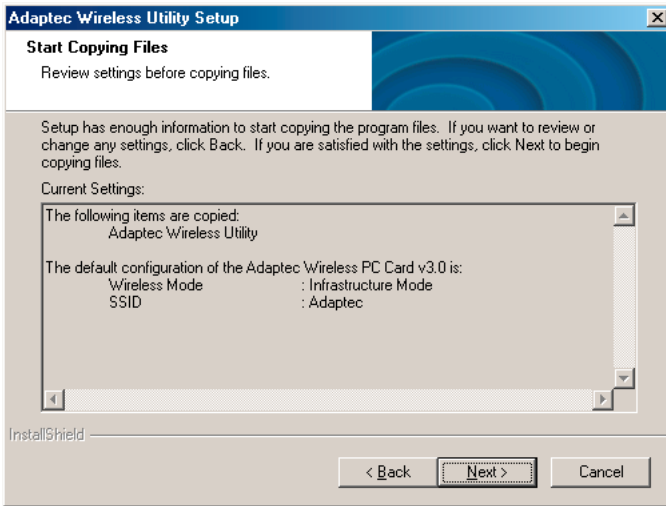
- The installation wizard chooses a default destination folder for the software files. Click **Next** to accept the default destination (recommended), or click **Browse** to select an alternate destination.



- You can choose where to store program icons in the Program Folder. Type a new folder name or select one from the Existing Folders list. Click **Next**.

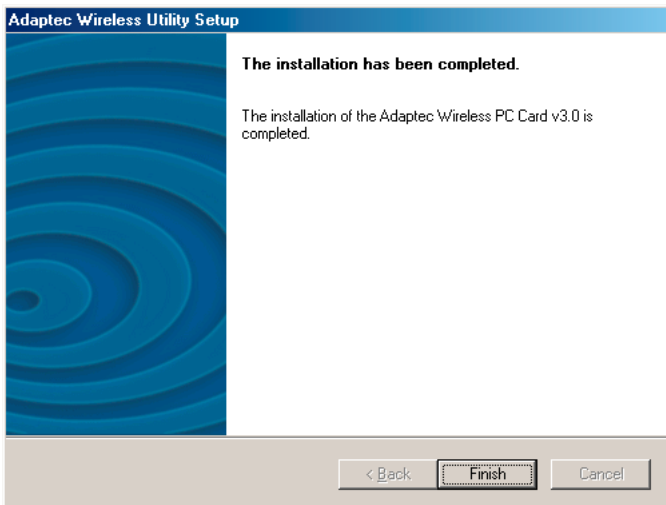


4 Click **Next**.



5 The software installation begins. The Setup Status appears on screen.

6 Click **Finish**.





**Note:** *Windows XP users only*—Windows XP has a built-in configuration application called Zero Configuration, which automatically takes over as the default utility for your Wireless PC Card.

When the Adaptec Wireless Utility installation is complete, a message appears telling you that you must disable Windows Zero Configuration before using the Adaptec Wireless Utility. Adaptec recommends that you use the Adaptec Wireless Utility instead of the Windows application. For more information, see [Disabling Zero Configuration \(Windows XP only\)](#) on page 21.

---

The software installation is complete. The Adaptec Wireless Utility icon appears on your Windows taskbar, as shown below. (Your system may automatically restart first.)



Adaptec Wireless Utility icon

See [Installing Network Protocols](#) on page 23 to continue.



**Note:** If you are using Windows XP and you choose to keep Zero Configuration as the default utility for your Wireless PC Card, you are finished the Installation Task List ([page 3](#)). Refer to your Windows XP documentation to continue the installation and set-up.

---

# Disabling Zero Configuration (Windows XP only)

Although the Adaptec Wireless Utility is installed on your Windows XP system, Windows XP has a built-in configuration application called Zero Configuration that automatically takes over as the default utility for your Wireless PC Card. To use the Adaptec Wireless Utility, you must first disable Zero Configuration.

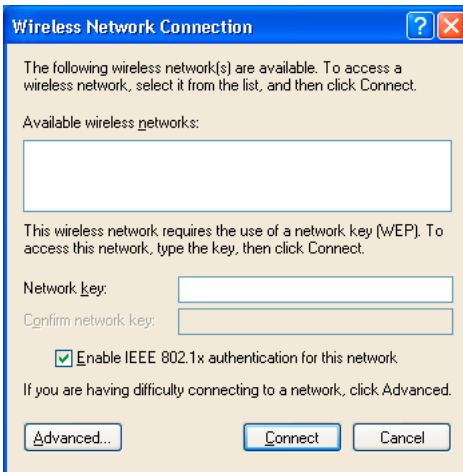
Although Zero Configuration is similar to the Adaptec Wireless Utility in functionality, the Adaptec Wireless Utility is easier to use and has extra security settings. Adaptec recommends using the Adaptec Wireless Utility instead of Zero Configuration. Follow the instructions provided in this section to disable Zero Configuration.

To disable Windows Zero Configuration:

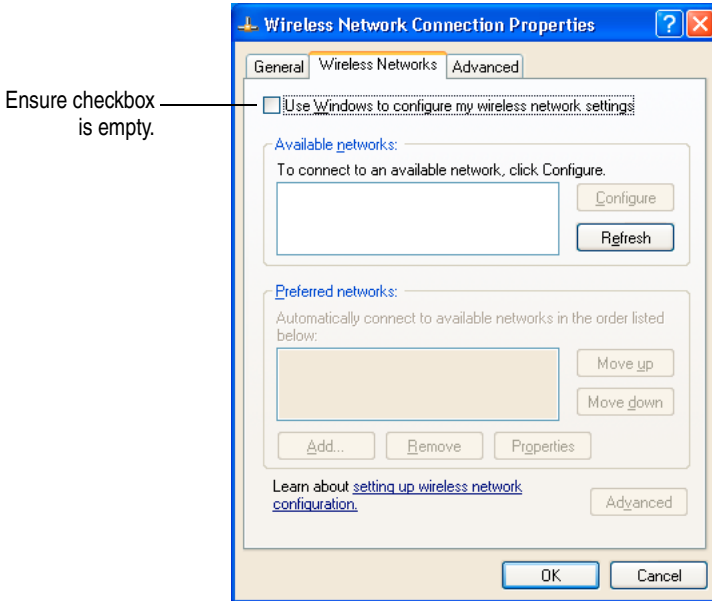
- 1 Click the **Windows Zero Configuration** icon on your taskbar.



- 2 Click **Advanced**.



- 3 Ensure that the **Use Windows to configure my wireless network settings** box is deselected, then click **OK**.



- 4 Open the Adaptec Wireless Utility. (See [page 28](#).) If the Adaptec Wireless Utility is already running, close it and re-open it.

# Installing Network Protocols

Before you continue, make sure that you have completed these tasks:

- Reviewed [About Wireless Technology and LANs on page 42](#) for a basic overview of WLANs.
- Installed the Wireless PC Card. See [page 4](#).
- Installed the device driver. See [page 6](#).
- Installed the Adaptec Wireless Utility. See [page 17](#).
- Disabled Zero Configuration (*Windows XP users only*). See [page 21](#).

The next step on the Installation Task List ([page 3](#)) is installing *network protocols*. Network protocols are rules that determine how devices on a network communicate with each other.

## Windows 2000/XP Users

If you are using Windows 2000 or Windows XP, your operating system automatically installed the necessary Network Protocols when you installed the Wireless PC Card.

See [Connecting to the WLAN on page 27](#) to continue.

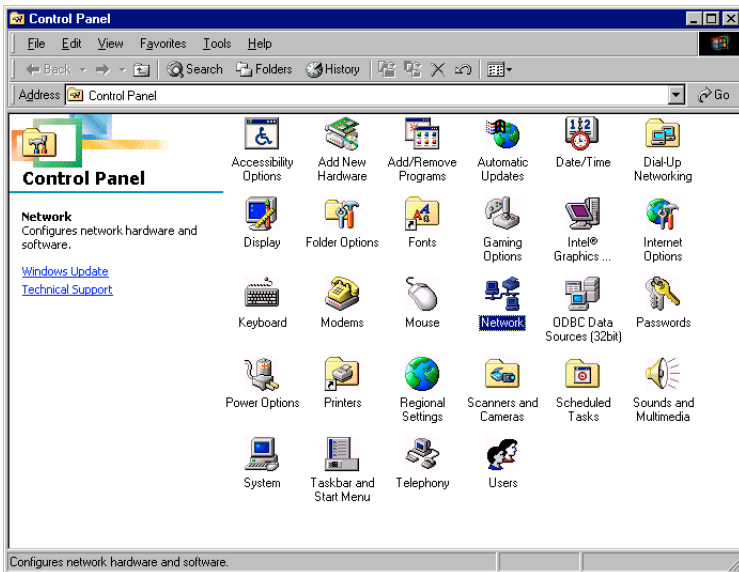
## Windows 98SE/Me Users

To install the appropriate network protocols:

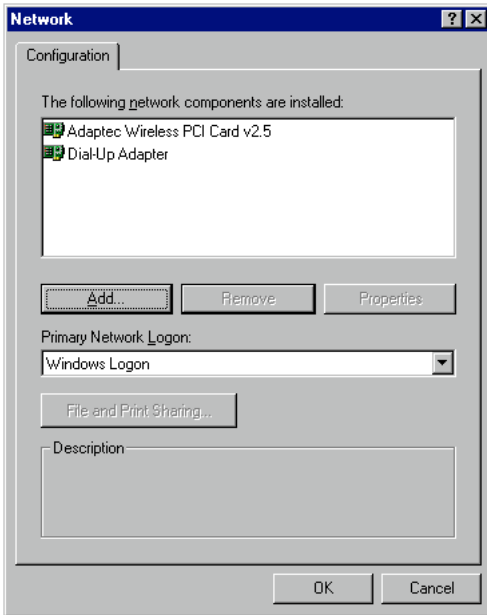
- 1 From the **Start** menu, click **Settings**, then click **Control Panel**.
- 2 Double-click **Network** and check that the network protocol isn't already installed. All installed protocols are listed under the **Configuration** tab.



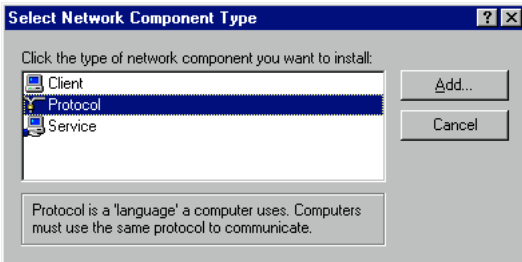
**Caution:** *Never* install duplicate protocols.



- 3 Select **Adaptec Wireless PC Card**, then click **Add**.

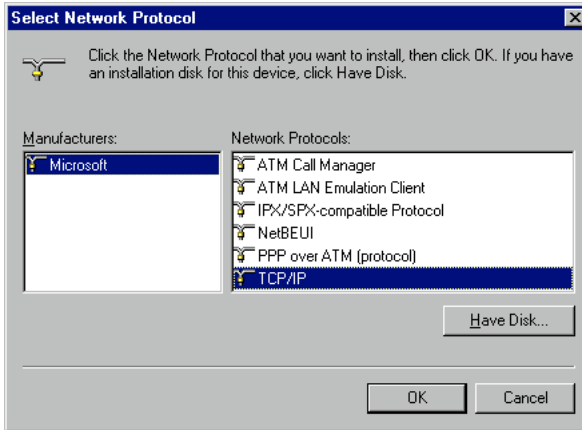


- 4 Select **Protocol**, then click **Add**.





- 5 Under Manufacturers, select **Microsoft**, under Network Protocols, select **TCP/IP**, then click **OK**.



The system updates the network configuration.

- 6 Click **Yes** to restart your computer.
- 7 See [Connecting to the WLAN on page 27](#) to continue with your last Installation Task.

# Connecting to the WLAN

Before you continue, make sure that you have:

- Reviewed [About Wireless Technology and LANs on page 42](#) for a basic overview of WLANs.
- Installed the Wireless PC Card. See [page 4](#).
- Installed the device driver. See [page 6](#).
- Installed the Adaptec Wireless Utility. See [page 17](#).
- Disabled Zero Configuration (*Windows XP users only*). See [page 21](#).

Adaptec Wireless products are preset to work together on a WLAN. If you are using *only* Adaptec Wireless products on your WLAN, you do not need to change the default settings on your Wireless PC Card. You have completed the Installation Task List. See [Checking Your Network Connection on page 30](#) for more information on using your Wireless PC Card.

If you have any non-Adaptec brand Wireless products on your WLAN, or if you have changed the default settings of your other Adaptec Wireless products, you must adjust the default settings on your Wireless PC Card to allow it to connect to your WLAN.

For your Wireless PC Card to connect to your WLAN, these specific settings must be identical with those of every other Wireless device on your WLAN:

- Operating Mode
- Wireless Network ID (SSID)
- Channel e (in Ad-hoc mode only)
- Encryption Settings
- Security Authentication
- Preamble Type

To connect your Wireless PC Card to your WLAN:

- 1 Open the Adaptec Wireless Utility by double-clicking the **Adaptec Wireless Utility** icon on your taskbar.



- 2 Click the **Configuration** tab.

- a Ensure that the Operating Mode setting is correct for your WLAN. Each station on your WLAN must be set to the same operating mode. (See [Changing the Operating Mode on page 32](#) for more information.)
- b Check that the Wireless Network ID (SSID) is the same as the one used on your other WLAN stations.

You can also set your Wireless Network ID to the word any, which allows your Wireless PC Card to connect to any Wireless device on your WLAN.



---

**Note:** Ensure that Access Points (APs) on your WLAN allow connections from Wireless devices set to any before using this setting.

---

- c If you are using Ad-hoc mode, check that the Channel number is the same number used on your other WLAN station. If you are using Infrastructure mode, the Channel number is set by your AP. (See [channel on page 45](#) for more information.)
- d Make any necessary changes, then click **Apply Changes**.

**3** Click the **Encryption** tab.

- a** Ensure that the Encryption Key Length setting is correct for your WLAN. Each station on your WLAN must have the same Encryption Key Length setting.

If your other WLAN stations are set to Disabled, you must set your Wireless PC Card to Disabled.

If your other WLAN stations have Encryption enabled, you must enable Encryption on your Wireless PC Card using *exactly the same* Encryption Key Length and WEP Key Entry Passphrase or Manual Entry information. (See [Changing the Encryption Settings on page 34](#) for more information.)

- b** Make any necessary changes, then click **Apply Changes**.

**4** Click the **Advanced** tab.

- a** If Encryption is enabled, ensure that the Security Authentication Type is set to **Auto**.
- b** Ensure that the Preamble Type is correct for your WLAN. Each station on your WLAN must have the same Preamble Type setting.
- c** Make any necessary changes, then click **Apply Changes**.

**5** Click **OK** to close the Adaptec Wireless Utility.

You have completed the Installation Task List.

See [Checking Your Network Connection on page 30](#) for more information on using your Wireless PC Card.

For more information on customizing your WLAN, see [Changing the Set-up of Your WLAN on page 31](#).

# Checking Your Network Connection

You can check the status of your network connection three ways:

- Look at the Link LED on your Wireless PC Card. If the LED is flashing, the adapter is searching for a connection. If it's glowing steady, the wireless connection is made. If it's dark, there is no wireless connection.
- Look at the Adaptec Wireless Utility icon on your taskbar. If the icon is green, the wireless connection is made. If the icon is red, the Wireless PC Card is searching for a connection.



Your Wireless PC Card is connected to the WLAN if the Utility icon is green and emits "radio waves".



Your Wireless PC Card is disconnected from the WLAN if the Utility icon is red and shows no "radio waves".

- Double-click the **Adaptec Wireless Utility** icon on your taskbar.
  - a Click the **Site Survey** tab.

Information about currently available APs on your WLAN is displayed.
  - b Click the **Link Status** tab.

The current status of your Wireless PC Card is displayed.
  - c Click **OK** or **Cancel** to close the Adaptec Wireless Utility.

For more information, or for help with your WLAN, see [Changing the Set-up of Your WLAN on page 31](#), [Troubleshooting on page 40](#), or refer to the Adaptec Support Knowledgebase at [ask.adaptec.com](http://ask.adaptec.com).

# Changing the Set-up of Your WLAN

You can use the Adaptec Wireless Utility to change the set-up of your WLAN by:

- Changing the operating mode. See [page 32](#).
- Choosing a specific AP. See [page 33](#).
- Changing the Encryption (WEP) settings. See [page 34](#).
- Changing the transfer rate. See [page 37](#).
- Enabling the Power Saving Mode. See [page 38](#).
- Adjusting the Transmit Threshold Control settings. See [page 38](#).
- Saving and using configuration profiles. See [page 39](#).

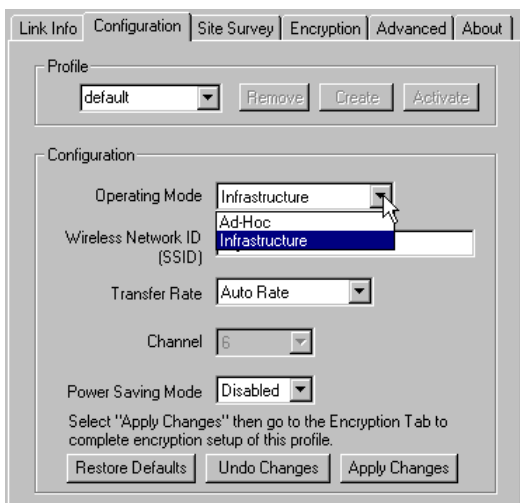
## Changing the Operating Mode

The Adaptec Wireless Utility offers two possible operating modes:

- **Ad-hoc mode** (sometimes referred to as *peer-to-peer mode*) allows two computers to connect to each other in wireless-to-wireless (or peer-to-peer) communication.
- **Infrastructure mode** allows multiple computers to interact, and is for WLANs that include an AP or Router.

To change the operating mode of your Wireless PC Card:

- 1 Open the Adaptec Wireless Utility. See [Step 1 on page 28](#).
- 2 Click the **Configuration** tab.



- 3 In the Operating Mode drop-down box, select your chosen operating mode, as shown above.
- 4 Click **Apply Changes**.
- 5 Click **OK** to close the Adaptec Wireless Utility, or see [Connecting to the WLAN on page 27](#) for additional information.

## Choosing an Access Point

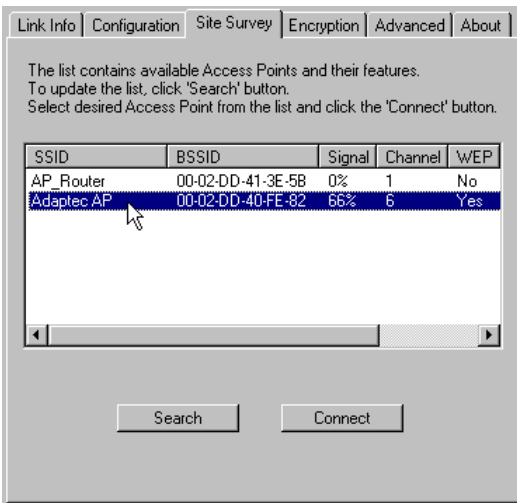
You can choose to connect to a specific AP from a list of all APs currently available to your Wireless PC Card. You might want to do this if you want to connect to a different WLAN.

To connect to a specific AP:

- 1 Open the Adaptec Wireless Utility. See [Step 1 on page 28](#).
- 2 Click the **Site Survey** tab.

Available APs are listed. Click **Search** to find more APs, if required.

- 3 Click on your chosen AP.



- 4 Click the **Link** tab and ensure that the AP's signal strength and link quality are acceptable.
- 5 Click **Connect**.

Once the connection is made, the Adaptec Wireless Utility opens the Link Status page, which shows you the connected Wireless network.

- 6 Click **OK** to close the Adaptec Wireless Utility.



## Changing the Encryption Settings

*Wired Equivalent Privacy (WEP)* is a security feature that encrypts the data being sent over the radio waves of your WLAN.

**Disabled** encryption allows your Wireless devices to share data in plain text. The default Encryption Key Length setting is *Disabled*.

Setting encryption to **64-Bit** or **128-Bit** encryption limits data sharing and increases data security, but may slow data transmission.

Set the level of security you require for your WLAN.



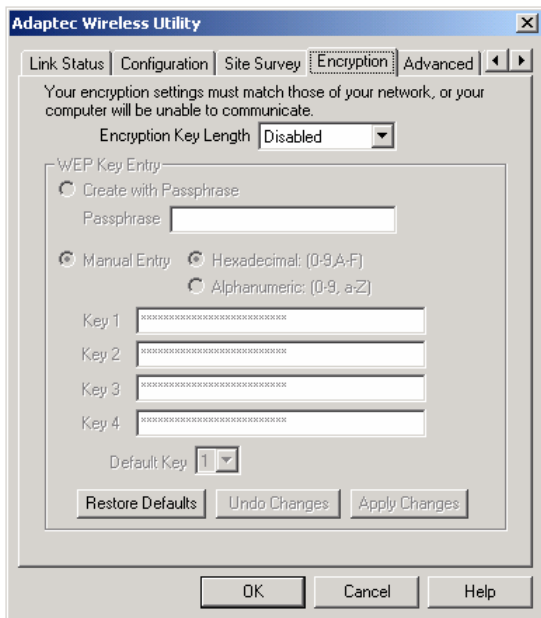
---

**Note:** For all the computers on your WLAN to communicate with each other and share data, they must have identical encryption (WEP) settings.

---

To change the encryption setting of your Wireless PC Card:

- 1 Open the Adaptec Wireless Utility. See [Step 1 on page 28](#).
- 2 Click the **Encryption** tab.



- 3 In the Encryption (WEP) drop-down box, select the setting you want.
- 4 If you select either **64-Bit** or **128-Bit**, you must create WEP keys, which control encryption, and set a *default key*. (The default key determines which of the four key sets is used for encryption and decryption.) See the next section to continue.

## Setting the WEP Keys

WEP keys can be numeric, alphabetic, or a combination of both. You can choose between Hexadecimal, which restricts you to numbers 0–9 and letters A–F, and Alphanumeric, which restricts you to numbers 0–9 and letters a–z/A–Z.

- Adaptec recommends that you create the keys manually if you have any non-Adaptec brand devices on your WLAN. Go to [Creating the Keys Manually](#) below to continue.
- If you have *only Adaptec brand products* on your WLAN, you can create a passphrase that automatically generates the required keys and sets a default key. Go to [Creating the Keys with a Passphrase on page 36](#) to continue.

## Creating the Keys Manually

- 1 Click **Manual Entry**, then choose either **Hexadecimal** or **Alphanumeric**.
- 2 Enter the keys in the Key 1 to Key 4 text boxes.

The number of characters in your key depends on the encryption key length:

- 64-bit keys require 10 Hexadecimal or 5 Alphanumeric characters
  - 128-bit keys require 26 Hexadecimal or 13 Alphanumeric characters.
- 3 Click **Apply Changes**. (You can restore the default encryption settings at any time by clicking **Restore Defaults**.)
  - 4 Click **OK** to close the Adaptec Wireless Utility.

## Creating the Keys with a Passphrase

- 1 Click **Create with Passphrase**, then type in your chosen word or phrase in the Passphrase text box.

As you type, the Adaptec Wireless Utility will auto-generate the required keys and set a default key. (In the example below, the passphrase lomcevak generated the four unique keys shown and set the default key to 1.)

Encryption [WEP] 64 Bits

WEP Key Entry

Create with Passphrase

Passphrase lomcevak

Manual Entry

Hexadecimal: [0-9,A-F]

Alphanumeric: [0-9, a-z]

Key 1 C39C05222E

Key 2 8DDCE06CAA

Key 3 3EC7C9A176

Key 4 0D7274C9EF

Default Tx Key 1

- 2 Click **Apply Changes**. (You can restore the default encryption settings at any time by clicking **Restore Defaults**.)
- 3 Click **OK** to close the Adaptec Wireless Utility.

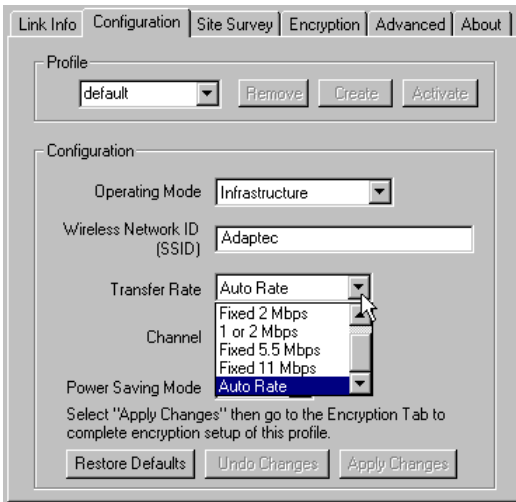
## Changing the Transfer Rate

The default transfer rate setting, *Auto Rate*, allows your Wireless PC Card to automatically adjust its transfer speed for optimal performance and the longest operating range. Adaptec recommends that whenever possible, you maintain the Auto Rate setting.

However, if your Wireless PC Card's transfer rate changes frequently, you can set a lower transfer rate to achieve a more stable connection. The fixed rate speed options are 11 Mbps (the highest rate), 5.5 Mbps, 1 or 2 Mbps, 2 Mbps, or 1 Mbps.

To change the transfer rate for your Wireless PC Card:

- 1 Open the Adaptec Wireless Utility. See [Step 1 on page 28](#).
- 2 Click the **Configuration** tab.



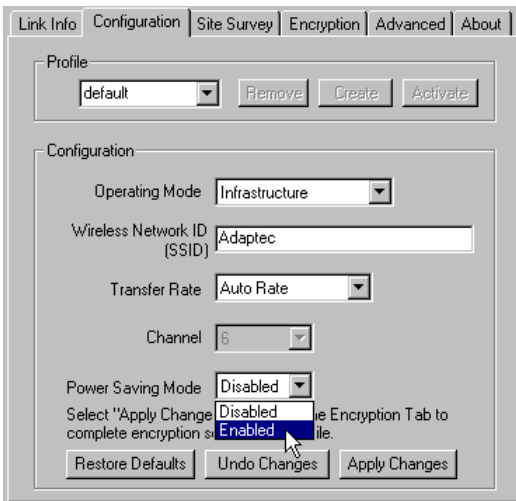
- 3 In the Transfer Rate drop-down box, select the transfer rate you want, as shown above.
- 4 Click **Apply Changes**, then click **OK** to close the Adaptec Wireless Utility.

## Enabling the Power Saving Mode

You can enable the Power Saving Mode if you want your Wireless PC Card to enter sleep mode when not transmitting data.

To enable Power Saving Mode:

- 1 Open the Adaptec Wireless Utility. See [Step 1 on page 28](#).
- 2 Click the **Configuration** tab.



- 3 In the Power Saving Mode drop-down box, select **Enabled**, as shown above.
- 4 Click **Apply Changes**, then click **OK** to close the Adaptec Wireless Utility.

## Adjusting the Transmit Threshold Control Settings

Changes to the Transmit Threshold Control settings can affect overall network performance. Adaptec *highly recommends* that these settings be left at their default values.

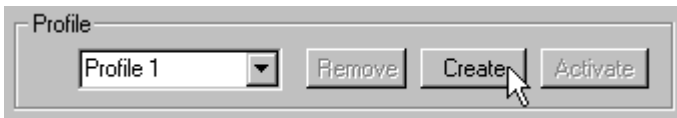
## Saving and Using Configuration Profiles

You can save your Wireless PC Card set-ups in different profiles for use in different working environments. Using saved profiles removes the need to set up (reconfigure) your Wireless PC Card each time you move from one WLAN to another. For instance, you may wish to save two profiles if you use both an office WLAN and a home WLAN.

The default profile contains the default settings of your Wireless PC Card.

To save a new profile:

- 1 Open the Adapteck Wireless Utility. See [Step 1 on page 28](#).
- 2 Click the **Configuration** tab.
- 3 In the drop-down box, type a new profile name, then click **Create**.



The utility creates a profile containing the current configuration settings.

Any configuration changes you make will associate with the new profile if you click **Apply Changes**.

To use an existing profile:

- 1 Select the profile from the drop-down box.
- 2 Click **Activate**.

To delete an existing profile:

- 1 Select the profile from the drop-down box.
- 2 Click **Delete**.

# Troubleshooting

If you encounter difficulties installing or using your Wireless PC Card, work through these troubleshooting tips.

## **My computer cannot link to the other Wireless devices on the WLAN.**

Ensure that you have configured your Wireless PC Card to work with the other Wireless devices on your WLAN. Work through the procedure provided in [Connecting to the WLAN on page 27](#).

If you have enabled WEP encryption, ensure that the WEP keys you've set match *exactly* with the WEP keys of your other Wireless devices.



**Note:** The same passphrase used on different brands of Wireless devices may not generate identical WEP keys. If you have any non-Adaptec brand Wireless devices on your WLAN, Adaptec recommends that you enter the WEP keys manually, not with a passphrase, to ensure that all WEP keys on your WLAN are identical. See [Setting the WEP Keys on page 35](#) for more information.

---

## **My Adaptec Wireless Utility icon is red. The Link LED on my Wireless PC Card is not on.**

Your Wireless PC Card is not linked to the WLAN. You may be outside the range of available APs.

- 1 Open the Adaptec Wireless Utility. See [Step 1 on page 28](#).
- 2 Click the **Site Survey** tab.

Available APs are listed. Click **Search** to find more APs, if required.

- 3** Select an AP, then click **Connect**.

If a link is made, the Adaptec Wireless Utility icon turns green (see [page 30](#)) and the Link LED on your Wireless PC Card lights up.

If no link is made, click the **Link** tab. If the Link Quality or Signal Strength values are lower than 25 percent, it's unlikely that you'll be able to connect to that AP.

Click **Re-Scan** to search for other available APs and repeat Step 3 if possible.

You may need to reposition your computer so that your Wireless PC Card is closer to an AP.

- 4** Click **OK** to close the Adaptec Wireless Utility.



# About Wireless Technology and LANs

This section provides a general overview of Wireless technology and LANs. There are many books and Web sites dedicated to this topic that can provide a more comprehensive explanation.

## What's a LAN?

A *network* is a group of computers that are connected together in a way that lets them share and exchange information and resources.

A *Local Area Network*, or LAN, is a network of computers that are in the same general physical location, usually within a building or small group of buildings. Computers on a LAN can share devices such as printers or scanners, they can share and exchange files without using floppy disks or CDs, and they can all use a single Internet connection.

## What's a Wireless LAN?

A *Wireless LAN* (WLAN) uses radio signals instead of cables or wires to connect all the computers in the network.

There are different types of wireless networks, each with its own set of features and benefits. Adaptec Wireless Network products are based on the Wi-Fi standard (wireless fidelity, like high fidelity or Hi-Fi in audio equipment), which means that they communicate at a maximum speed of 11 Mbps (Megabits per second) within a radius of up to 1000 feet.

## How Do I Create a Basic WLAN?

A WLAN can be as simple as two computers, each installed with a Wireless Network Interface Card (NIC), such as Wireless USB Adapter or Wireless PC Card. You can expand your WLAN to include more computers, and you can incorporate a WLAN into a pre-existing wired LAN by using hubs, Wireless APs, Wireless Routers, and additional Wireless NICs.

Go to the Adaptec Web site at [www.adaptec.com](http://www.adaptec.com) for more information on Wireless products.

## What About Security?

You have multiple options for adding security to your WLAN. Set security according to the needs of your network.

- You can limit access to parts of the network by setting passwords and creating special shared files. Refer to your operating system's documentation for more information.
- You can protect your network from intrusion from the outside world (via the Internet) by installing a router. Go to the Adaptec Web site at [www.adaptec.com](http://www.adaptec.com) for more information on Adaptec's Wireless Router.
- You can exclude unauthorized users from your WLAN by using the security and encryption features built into your Wireless device. See [Connecting to the WLAN on page 27](#) and [Changing the Set-up of Your WLAN on page 31](#), and refer to your other Wireless devices' documentation for more details.

# Technical Specifications

Standards	IEEE 802.11b PCMCIA 2.1 and JEIDA 4.2 standard
Channels	11 channels (US, Canada) 13 channels (Europe) 14 channels (Japan)
Antenna	Built-in strip antenna
Frequency	2.4 to 2.4835 GHz (Industrial Scientific Medical Band)
Data Rate	Up to 11 Mbps
Operating Ranges	Indoor (varies depending on environment): <ul style="list-style-type: none"><li>■ Up to 50 M @ 11 Mbps</li><li>■ Up to 80 M @ 5.5 Mbps</li></ul> Outdoor (varies depending on environment): <ul style="list-style-type: none"><li>■ Up to 150 M @ 11 Mbps</li><li>■ Up to 300 M @ 5.5 Mbps</li></ul>
Temperature	Operating: 0 °C ~ 55 °C Storage: -25 °C ~ 70 °C
Humidity	10% to 90% (non-condensing)

# Glossary

## **Access Point**

An Access Point (AP) is a wired controller that sends data to the wireless NICs installed in your network computers, and receives data back from them. An AP is often connected to the network computer that has Internet access, or is directly connected to the Internet by a DSL or cable modem. The AP then allows other stations on your WLAN to access the Internet.

## **Ad-hoc mode**

See [operating mode](#).

## **channel**

Your Wireless device communicates with other devices on your WLAN over a specific channel. The channel is similar to a radio channel—any Wireless device linking to your Wireless device must be "tuned" to the same channel.

In Infrastructure mode, the channel is selected by the AP or Router. It automatically selects a channel from the range available for your geographical location (11 channels are available for use in the United States) and communicates that channel to your Wireless device. In Ad Hoc mode only, you can set the channel yourself.

## **device driver**

A device driver is a software program that lets an adapter (such as a PC card, PCI card, or USB adapter) or any other device (such as a printer or CD-ROM drive) communicate with the computer that it's connected to.

## **Ethernet**

Ethernet is a popular networking system that uses NICs and cables (and often, other networking devices such as bridges and hubs) to create a LAN.

## **firewall**

A firewall is a security device that helps prevent users outside your network from accessing your LAN or WLAN. A firewall uses special software that keeps unauthorized users out of your network.

## **hot-swap**

To hot-swap is to remove or attach a device without first shutting off your computer.

## **hub**

A hub works with a computer like a power strip works with an electrical outlet—it multiplies the number of ports you have so that you can have more devices plugged in at the same time.

## **Infrastructure mode**

See [operating mode](#).

## **LAN**

Stands for Local Area Network. LANs are *wired* networks.

## **LED**

Stands for Light-Emitting Diode.

## **MAC address**

A Media Access Control (MAC) address is a 12-character string that uniquely identifies each network device on your network (for instance, your Wireless USB Adapter or Wireless AP). A MAC address is built into each device. Each network device is labelled with its MAC address.

## **network**

A network is two or more computers connected so that they can share information, equipment, and programs.

## **network device**

A network device is any device (such as an AP or a computer with a NIC) that connects to the network. See also [transfer rate](#).

## **network protocols**

Network protocols are rules that determine how devices on a network communicate with each other.

## **NIC**

Stands for Network Interface Card. A Wireless NIC is a computer card (such as a Wireless PCI adapter, Wireless PC Card, or Wireless USB adapter) that lets your computer link to a WLAN.

## **operating mode**

Ad-hoc mode (sometimes referred to as peer-to-peer mode) allows two computers to connect to each other in wireless-to-wireless (or peer-to-peer) communication. Do not choose Ad-hoc mode if your WLAN contains an AP and multiple computers.

Infrastructure mode is for WLANs that include an AP or Router and multiple computers.

## **PCI**

Stands for Peripheral Component Interconnect.

## **peer-to-peer mode**

See [operating mode](#).

## **preamble**

A preamble is a signal used to synchronize the transmission timing on your WLAN. A series of transmission pulses is sent ahead of the data to signal a new transmission. This ensures that Wireless devices receiving the data correctly interpret when the transmission starts.

The Preamble setting for your Wireless device must be identical to the Preamble setting on your AP.

## **SSID**

See [Wireless Network ID](#).

## **transfer rate**

The transfer rate is the speed at which your Wireless device is sending data. It is expressed in Mbps.

The default transfer rate setting, *Auto Rate* (or *Automatic*), allows your Wireless device to automatically adjust its transfer speed for optimal performance and the longest operating range. Adaptec recommends that whenever possible, you maintain the Auto Rate setting.

However, if your Wireless device's transfer rate changes frequently, you can set a lower transfer rate to achieve a more stable connection. The fixed rate speed options are 11 Mbps (the highest rate), 5.5 Mbps, 2 Mbps, 1 or 2 Mbps, or 1 Mbps.

## **USB**

Stands for Universal Serial Bus.

## **WEP**

Wired Equivalent Privacy (WEP) is a security feature that provides confidentiality (by encrypting the data being sent over the radio waves of your WLAN) and authentication (by using a shared key between the Wireless device and the AP).

## **WEP key**

WEP keys control encryption.

WEP keys can be numeric, alphabetic, or a combination of both. You can choose between Hexadecimal, which restricts you to numbers 0–9 and letters A–F, and Alphanumeric, which restricts you to numbers 0–9 and letters a–z/A–Z.

The number of characters in your key depends on the encryption key length: 64-bit keys require 10 Hexadecimal or 5 Alphanumeric characters; 128-bit keys require 26 Hexadecimal or 13 Alphanumeric characters.

## **Wireless device**

A Wireless device (or Wireless network device) is any Wireless device that connects to the network. See also [network device](#).

### **Wireless Network ID**

The Wireless Network ID (also referred to as the SSID) is like a secret code that your AP and your Wireless devices share to prevent unauthorized users from accessing your WLAN. Your Wireless devices can only connect to your AP if they have the same SSID as the AP. Wireless devices in Ad-hoc mode must be set to the same SSID.

The Wireless Network ID is case-sensitive and must not exceed 32 characters.

### **WLAN**

Stands for Wireless Local Area Network. WLANs use radio signals instead of wires to connect network stations.

### **WLAN station**

See [transfer rate](#).





**Adaptec, Inc.**  
691 South Milpitas Boulevard  
Milpitas, CA 95035 USA

© 2002 Adaptec, Inc.  
All rights reserved. Adaptec and the Adaptec logo  
are trademarks of Adaptec, Inc. which may be  
registered in some jurisdictions.

Part Number: 513357-06, Ver. AA, LB 09/02