

VideOh! DVD Media Center USB 2.0 Edition AVC-2310

Getting Started



adaptec®

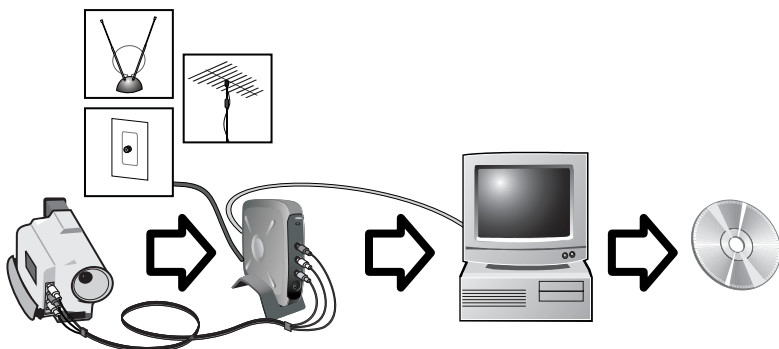
DISCLAIMER: This product may be designed to assist you in reproducing materials. In doing so, you must have permission from the copyright owner of the materials to avoid violating copyright law and being subject to payment of damages and other remedies.

In this Guide...

Overview	2
What's in the Kit	3
Three Simple Steps	3
Installing Your AVC-2310	4
Connecting Your AVC-2310	6
Creating a TV Project with WinDVR and MyDVD	7
Creating a Video Project with MyDVD	14
Finding More Information	19
Registering Your AVC-2310	19
Getting Help	19

Overview

Congratulations on the purchase of your Adaptec VideOh!™ Media Center kit. With this kit, you can watch television on your computer, and convert television programs and analog video from your camcorder or VCR into digital format to create you own Hollywood style video CDs (VCDs) or DVDs.



Connect TV tuner or analog video device

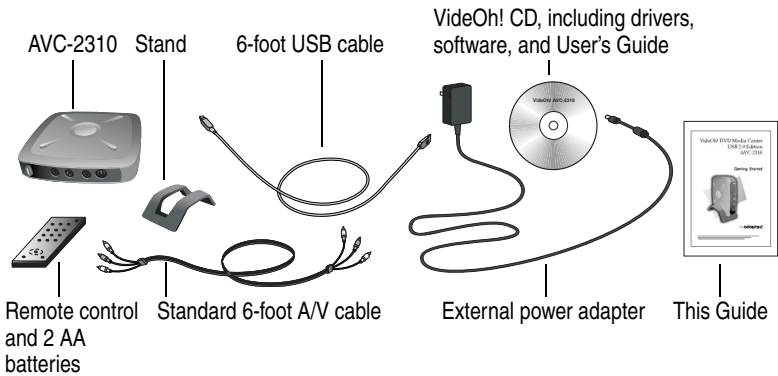
This VideOh! kit includes a complete suite of software that will enable you to watch TV on your computer, control television content with the latest personal video recorder (PVR) technology, and burn television programs to VCD s or DVD s.

VideOh! Media Center lets you be creative. You can add backgrounds and menus to your videos for easy navigation. With VideOh! Media Center you can also perform even more sophisticated editing, like adding music, transitions, and titles.

VideOh! Media Center also lets you capture you favorite video clips and organize and customize them to suit your imagination. Then you are ready to burn a VCD or DVD and share your personalized content with others.

What's in the Kit

Your Adaptec VideOh! Media Center Kit includes:



Three Simple Steps

Get up and running with VideOh! Media Center in three basic steps:

- **Install** — Install your hardware and software.
- **Connect** — Connect your video device (camcorder, VCR) or TV tuner (cable, receiver, antenna).
- **Create** — Capture a video, customize it a bit, then burn it. Or, use your AVC-2310 to record a TV program for later viewing or long-term storage on DVD or VCD.

These steps are described in the rest of this booklet. For more details, see the *User's Guide* included on the VideOh! CD or go to the online Help system when you're using the software.

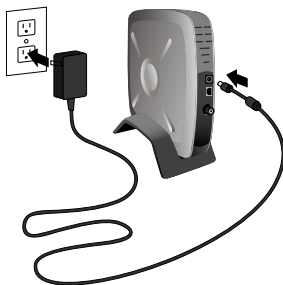
Before You Begin

If you have older versions of Sonic[®] MyDVD[™] or InterVideo[®] WinDVR[™] already installed on your system, uninstall them before beginning the VideOh! installation.

Installing Your AVC-2310

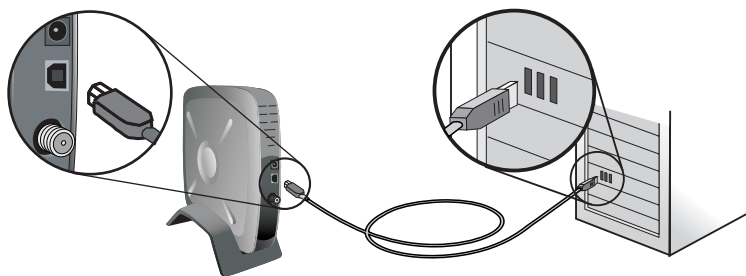
To install your VideOh! Media Center hardware and software:

- 1 Connect the power adapter to the AVC-2310.



Note: You can set your AVC-2310 in its stand, as shown, or you can lay it flat on your desk. Built-in rubber pads help keep the AVC-2310 in place when it's not in its stand.

- 2 Turn on your computer if you haven't already, then connect the AVC-2310 to your computer using the provided USB 2.0 cable.



- 3 Insert the VideOh! CD into your CD-ROM drive.
- 4 Turn on the AVC-2310 by pressing the **Power** button. The LED on the front of the AVC-2310 lights up.



Note: If the VideOh! Software Installation screen appears, exit this screen until driver installation is complete.

Windows detects the AVC-2310 and starts the Found New Hardware wizard. This wizard steps you through the process of installing the necessary drivers.

- 5 Follow the on-screen instructions.
 - If you are using Windows 98SE, you may need your Windows 98SE CD to complete the installation.
 - If you are using Windows XP or Windows 2000 and you have plugged your device into a USB 1.1 port, you will see a message indicating that a high-speed USB device is plugged into a non-high-speed USB port. This means your AVC-2310 will run at the slower USB 1.1 speed. To increase your speed you may want to upgrade to USB 2.0. Go to www.adaptec.com for more information on USB 2.0 adapters.
 - If you are using Windows XP, you may see a warning message about Microsoft Windows logo certification. Click **Continue Anyway**.
- 6 When the driver installation is complete and you've clicked **Finish**, you may see a message asking you to restart your computer. Click **Yes**. The LED on the front of the AVC-2310 becomes green after you finish the driver installation.
You are now ready to install the software.
- 7 From the main VideOh! Installation screen, click **Install Software**, then click **WinDVR**.
If the VideOh! installation screen doesn't appear, use Windows Explorer to display the CD contents, then click **autorun.exe**.
- 8 Follow the on-screen instructions to install InterVideo WinDVR software. During the installation, if you are prompted to install DirectX, do so.
- 9 From the main VideOh! Installation screen, click **Install Software**, then click **MyDVD**.



Note: *Windows 98SE only*—Your system may automatically install an updated version of Windows Installer, then prompt you to restart your computer. Follow the on-screen instructions to continue the installation.

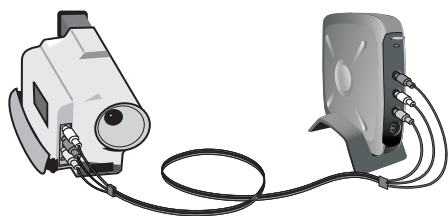
- 10 Follow the on-screen instructions to install Sonic MyDVD and the ArcSoft® ShowBiz™ companion software.
- 11 When the installation is complete, restart your computer.
You are now ready to CONNECT.

Connecting Your AVC-2310

Follow these steps to connect your video device (VCR or camcorder) or TV tuner (cable, satellite receiver, antenna, and so on) to the AVC-2310.

Connecting a Video Device

Connect your video device to your AVC-2310 using the included A/V cable or the proprietary cable that came with your device.



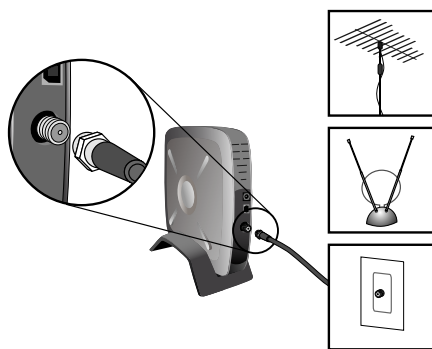
Connect white audio plug to white audio port and red audio plug to red audio port.

Connect yellow video plug to yellow video input port.

S-Video users only—Connect your S-Video cable (not included) to your analog video device using the S-Video port on your AVC-2310. You can use the audio plugs of the A/V cable included in your VideOh! Media Center kit to connect to the Audio-L and Audio-R ports.

Connecting a TV Tuner

Connect your TV tuner to your AVC-2310 using standard TV cable.



Now you're ready to CREATE.

Creating a TV Project with WinDVR and MyDVD

These instructions give you the basic steps for capturing TV programming, trimming it, and burning it to DVD or CD.



Note: Refer to the *User's Guide* on the VideOh! CD for a more comprehensive overview of how to use InterVideo WinDVR to watch and record TV programs.



Note: To create a video project, see [page 14](#).

Before you begin creating:

- Make sure your TV source is connected to the AVC-2310.
(See [page 6](#).)
- Make sure that your AVC-2310 is powered on.
- If you have an external DVD/CD recorder, make sure it is connected to your computer and switched on. You need a DVD-Recordable drive and appropriate media to burn DVDs. DVD-ROM, CD-R, and CD-RW drives do not have the capability to burn DVD discs. However, a CD-Recordable drive can burn a Video CD that you can play back on a compatible DVD player.
- Ensure that MyDVD is not open.



Caution: Do not attempt to run the WinDVR and MyDVD applications simultaneously. Close one application before opening the other one.

Using WinDVR (An Overview)

When WinDVR is opened, two windows appear on your desktop—the Display Window and the Control Panel.

The Display Window is where you view live or captured TV programs. You can move and resize the window to suit your needs. The Display Window may be black or show static until an available channel is selected.

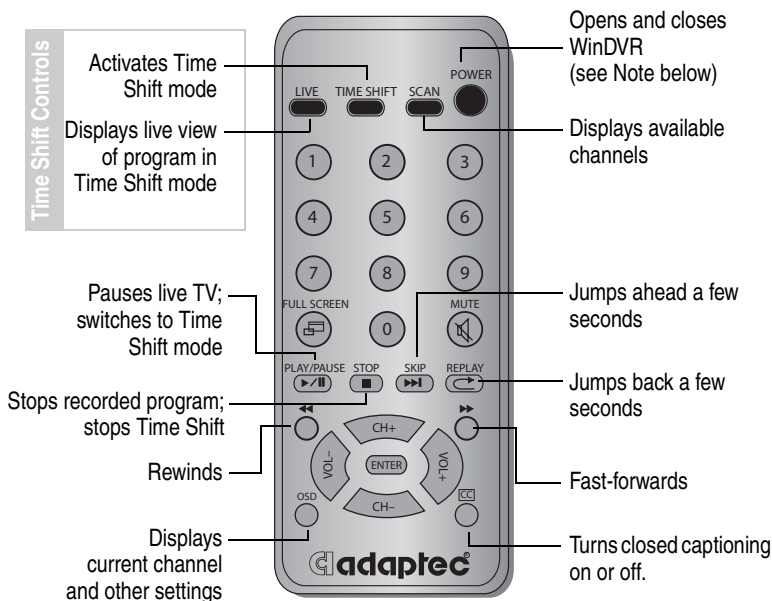
The Control Panel buttons (shown below) are similar to the buttons on a standard VCR control panel. Click ? on the Control Panel to find more detailed information about each button.



Navigating WinDVR

The Control Panel buttons can be navigated by mouse, or by keyboard shortcuts. See the *User's Guide* on the VideOh! CD, or click ? on the Control Panel for more information on keyboard shortcuts.

The remote control runs on two AA batteries (included in the kit) and features buttons and functions similar to standard TV remote controls. Its special features are explained in the Figure below.



Note: The Power button opens and closes the WinDVR software. It does *not* power on your AVC-2310 device or your computer.

You can use the remote control to perform most WinDVR functions. Refer to the *User's Guide* on the VideOh! CD for more information.



Note: If you have connected a digital cable or satellite receiver to your AVC-2310, you must use the set-top box remote control to tune your TV signal. The channel selection buttons on the Control Panel/keyboard/remote control will not work.

Opening WinDVR

To open WinDVR, double-click the **InterVideo WinDVR** icon (shown at right) on your desktop, or press the Power button on the remote control. (See [Navigating WinDVR on page 9](#) for more information.)



Completing the Initial Set-up

The first time you open WinDVR after installation, a wizard opens to lead you through the initial set-up. Follow the on-screen instructions to configure the software to meet your specific needs.

1 In the Device window:

- Set Device to **Adaptec USB Capture Device**.
- Set Source to **TV**.
- Do not adjust the Standard setting. WinDVR automatically adjusts this setting to match the geographical area you choose in [Step 2](#).

2 In the TV window:

- Set Tuner to **Antenna** if you are using an antenna; otherwise, select **Cable**.
- Set Country or Region to your geographical location. WinDVR uses this information to set the device standard, and provide TV programming schedules for your location through an electronic program guide (EPG).

3 Leave all options in the iEPG window at their default settings.

4 In the Channel window, click **Autoscan**.

An autoscan lets WinDVR know which channels are available. You can perform an autoscan at any time in the Setup window.

5 Adaptec recommends that you not change the default information in the Storage window. Keep the default Storage Location information.



Note: For more information on settings, see the *User's Guide* on the VideOh! CD, or click ? on the WinDVR Control Panel.

Recording a TV Program



Note: Refer to the *User's Guide* on the VideOh! CD for more information on recording, creating recording schedules, and using the electronic program guide (EPG).

To capture your TV programming:

- 1 Ensure you have enough disk space on your hard drive to accommodate the new file. Refer to the *Getting Help* section of the *User's Guide* on the VideOh! CD for help estimating capture file sizes.
- 2 Select the channel you want, using the Control Panel, keyboard, remote control, or your set-top box controls.



Note: WinDVR cannot control the channels on your digital cable or satellite receiver set-top box.

- 3 Click the **Record** button on the Control Panel to begin recording.



Stop button (grayed-out until
Record or Play button is clicked)

Record button

WinDVR indicates how much disk space (recording time) is left on your hard drive. Use this information to ensure you have enough room available to record your program.

- 4 Click the **Stop** button when you're finished recording.
- 5 When prompted, enter a name for the recorded file, then click **OK**. By default, your file will be saved to the My Video folder under My Documents in Windows Explorer.

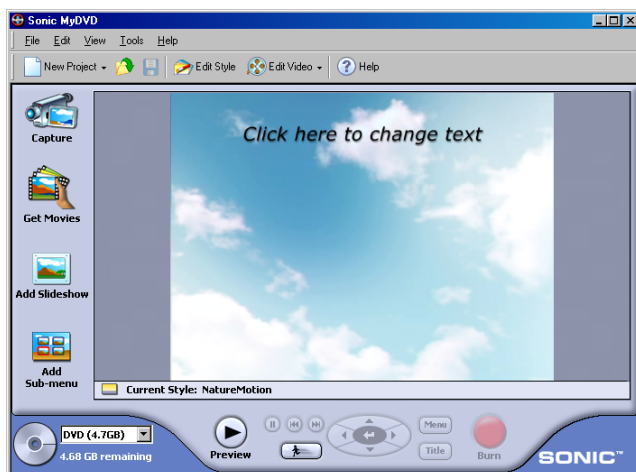
Importing to MyDVD

To burn a recorded program onto a DVD or CD, you must first import it to MyDVD.

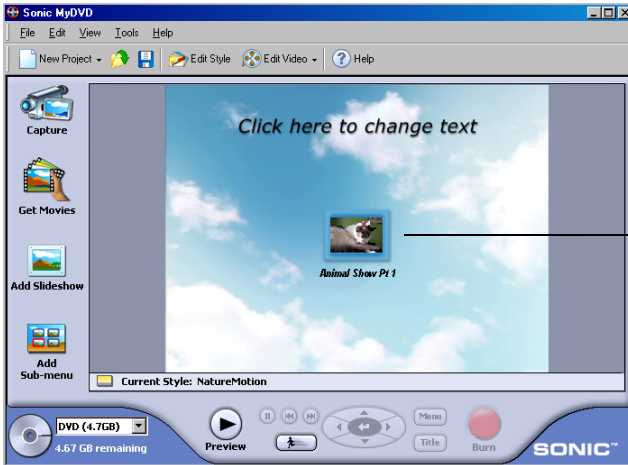
- 1 Close WinDVR. Do not open MyDVD when WinDVR is running.
- 2 Start MyDVD by double-clicking the **Sonic MyDVD** icon on your desktop. The Welcome window appears.



- 3 Move the mouse pointer over either DVD-Video or Video CD, then click **Create or Modify a... Project**. The Main project window appears.



- 4 Click **Get Movies**. Select the video file you want, then click **Open**.
- 5 Your file is loaded into MyDVD and appears as a thumbnail picture on your Main project window.



The layout shown in the MyDVD Main project window is what your DVD menu will look like on your TV.

Completing Your Project

Now that you've captured your TV program, you can trim it, customize it, and burn it onto DVD or VCD for long-term storage or personal viewing.

See the sections beginning with [Trimming Your Video on page 17](#) for detailed editing, previewing, and DVD/VCD burning instructions. Then see [Sharing Your DVD or VCD on page 18](#) for tips on watching your new DVD or VCD.

Creating a Video Project with MyDVD

This section gives you the basic steps for capturing video, trimming it, and then burning it to DVD or CD. To create a DVD from TV programming, see [page 7](#).

For more information, refer to the online tutorial included with Sonic MyDVD. Or, when you're using this software, click **?** or **Help**, to display detailed information about any step you want to perform.

Before you begin creating:

- Make sure your analog video device (such as a camcorder or VCR) is connected to the AVC-2310 and switched on.
- Make sure that your AVC-2310 is powered on.
- Ensure that WinDVR is not open.
- If you have an external DVD/CD recorder, make sure it is connected to your computer and switched on. You need a DVD-Recordable drive and appropriate media to burn DVDs. DVD-ROM, CD-R, and CD-RW drives do not have the capability to burn DVD discs. However, a CD-Recordable drive can burn a Video CD that you can play back on most DVD players.

Capturing Your Video

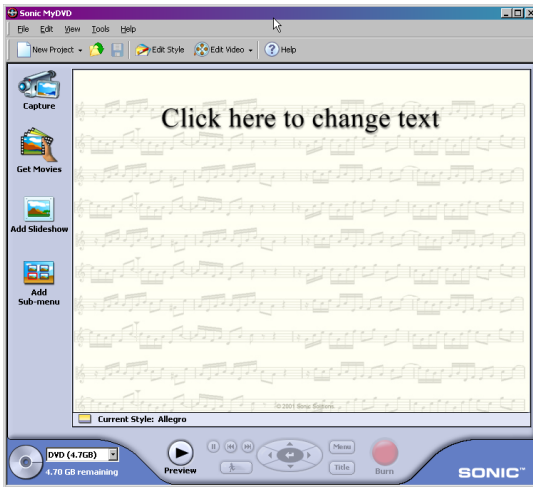
To successfully capture your video, complete these steps, in order:

- 1 Start MyDVD by clicking the **Sonic MyDVD** icon on your desktop. The Welcome window appears.

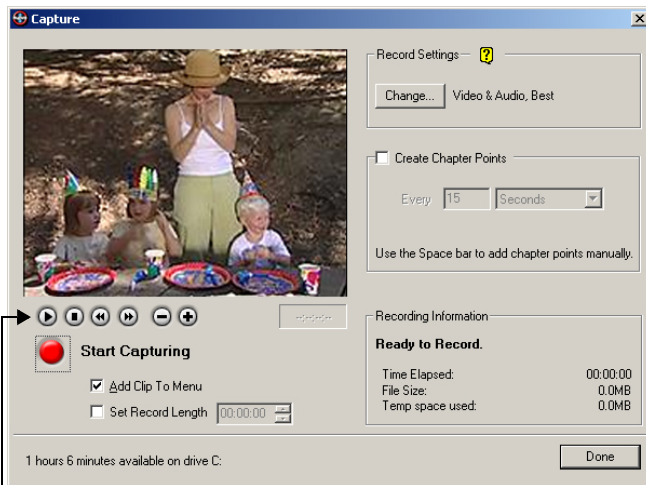


Click here for more information

- 2 Move the mouse pointer over either DVD-Video or Video CD, then click **Create or Modify a... Project**. The Main project window appears.



- 3 Click **Capture**. The Capture window appears.



—These buttons won't operate your analog video device. Use the Play, Stop, and other control buttons on your device to control your analog video tape.

- 4 Press the **Play** button on your analog video device. The video image appears in the Capture window, as shown in [Step 3](#).

- 5 To begin transferring your video to your computer, click **Start Capturing**.

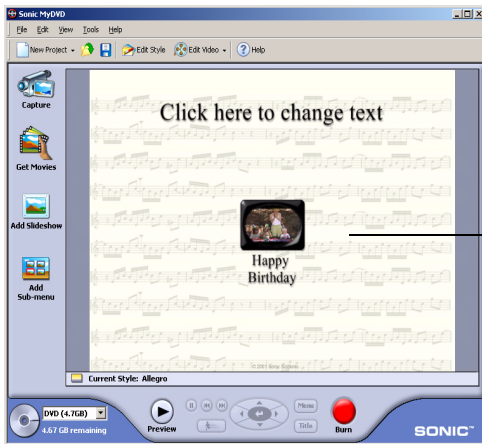
MyDVD captures your video, including the audio.



Note: If you get any error messages at this point in your video capturing, stop your analog video device and see [Need Help Capturing Your Video?](#) on page 20.

- 6 When you want to stop transferring your video to your computer, click **Stop Capturing**, then stop or pause your analog video device.
- 7 On the Save As screen, enter the File name of your video clip and click **Save**. The file name you choose, becomes the title of your video clip and is displayed on the Main project window.
- 8 Click **Done** when finished.

Your video clip is saved and you will see a thumbnail picture on your Main project window.



The layout shown in the MyDVD Main project window is what your DVD menu will look like on your TV.

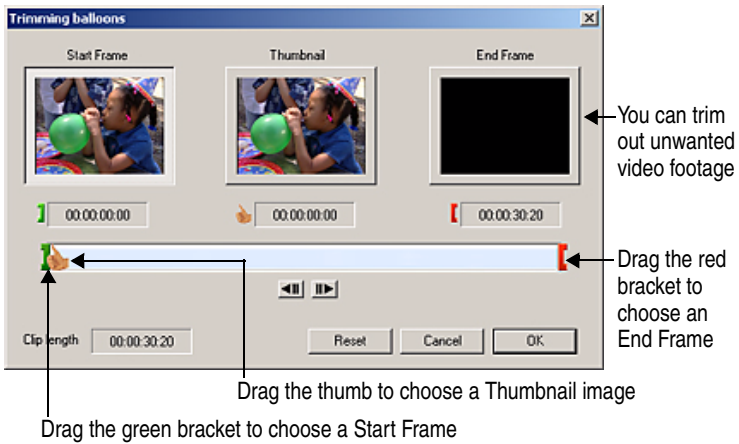


Note: If you plan to do multiple video captures in the same session, save your project, then close and relaunch MyDVD after six captures.

Trimming Your Video

Now that you've captured some video footage, you can trim it. For example, you can change your Start and End points. You can also choose the specific video frame that you want to use as the thumbnail picture that is displayed in your Main project window.

- 1 From the Main project window, double-click the thumbnail for the video clip you want to trim.
- 2 Use the controls in the Trimming window to trim your video.



- 3 Click **OK** when finished.



Note: For more advanced editing functions, use the ArcSoft Showbiz companion software included with MyDVD. For more information, see [Finding More Information on page 19](#).

Previewing Your Project

It's a good idea to see how your DVD/VCD project will look before you burn it to the disc. To preview your project, press **Preview** at the bottom of your Main project window, then double-click the thumbnail clip you want to look at.

When you have previewed your project, press **Stop**.

- If playback appears fuzzy and unclear (for example, the edges of objects, especially objects in motion, are feathered), it is because of a difference between how televisions and computer monitors display video. This effect is not noticeable when you play back the finished DVD or VCD disc on your TV.
- If your computer's processing speed is less than 800 MHz or if you are using a slower video card, your preview video in the MyDVD capture window may appear choppy. However, the finished DVD or VCD, played back on your TV, will be fine. Updating the drivers for your computer's video and/or audio card may minimize this problem. Check your video or sound card manufacturer's website for driver updates.

Burning Your DVD or VCD

When you are satisfied with how your DVD or VCD project looks, you are ready to burn it onto a recordable DVD or CD.

- 1 Insert a recordable DVD or CD into your computer's DVD or CD recorder.
- 2 On the Main project window, click **Burn**.
- 3 Follow the on-screen instructions.

You will be notified when your DVD or VCD is successfully completed. On average, a 30 minute DVD or VCD can take up to 2 hours to burn (depending on the speed of your computer and burner).

You can play your newly created DVD or VCD on any compatible DVD/CD-ROM drive or DVD player.

Sharing Your DVD or VCD

Now that you've captured your video and burned it to a DVD or CD, you're ready to share it. You can play your newly created DVD on most compatible DVD players. You can play your newly created VCD on most compatible DVD players or CD-ROM drives.

You can play your DVDs the way you play any standard DVD, using the controls on your DVD player or remote control.

To play a VCD, you need to select the video clip you want to view by using the number pad on the video player remote control. If you have more than 6 video clips, you can navigate between menu screens by using the skip forward and back controls.

Finding More Information

To learn more about how to use Sonic MyDVD and ArcSoft Showbiz:

- In the MyDVD Welcome window, click the **Help** button or **Tutorial** button.

In the project window, click the **Help** menu and select **MyDVD Help** or **Tutorial**.

- In Showbiz, click ? on the ShowBiz main screen to open the online Help and Learn the Basics tutorial. Right-click on any screen item to open context-sensitive Help.

To learn more about how to use InterVideo WinDVR:

- On the WinDVR Control Panel, click ? to open online Help topics.

Registering Your AVC-2310

To make sure that you're eligible for support and upgrades, and to qualify for future promotions, please register your AVC-2310 by going to the Adaptec Web site at register.adaptec.com.

Getting Help

If you have any problems installing or using your AVC-2310, work through the tips and hints in this section.

Need Help with Your AVC-2310?

- Ensure that your analog video device is connected and powered on, or that your TV tuner (cable, receiver, antenna) is properly connected. Double-check all cable connections.
- Try connecting to a different USB port on your computer. In doing so, you may need to reinstall the drivers.
- If your AVC-2310 is connected to a USB hub, try connecting it directly to your computer's USB port. You may also need to reinstall the drivers.
- Ensure that the AVC-2310 drivers are correctly installed. See the Getting Help section in the *User's Guide* on the VideOh! CD for help double-checking driver installation.
- If the LED is blinking orange, save your work, close MyDVD or WinDVR, then power your AVC-2310 off and then on again.

Need Help Capturing Your TV Program?

- Ensure that you have enough room on your hard drive to record the programming you want. Refer to the *Getting Help* section of the *User's Guide* on the VideOh! CD for help estimating capture file size.
- To schedule the recording of a TV program:
 - Ensure that the date and time on your computer is accurate.
 - Leave your computer and your AVC-2310 powered on. If you have a digital cable or satellite receiver, also leave your set-top box powered on.
 - Disable sleep/hibernate mode on your computer. Refer to your computer's documentation for instructions.
- Your computer must be connected to the Internet and WinDVR must be set to your geographical location before you can view current and future programming schedules.

Once you have set a schedule for recording future programs, your computer can be disconnected from the Internet. You do not need a live Internet connection to record programs.

- *Digital cable or satellite receiver users only*—Because WinDVR cannot control the channel setting of your set-top box, you can schedule the recording of multiple programs *only if* all those programs appear on the same channel. Refer to the *User's Guide* on the VideOh! CD for more information.
- Refer to your EPG Web site for help using the EPG.

Need Help Capturing Your Video?

- If your analog video device, such as a VCR or camcorder, is not powered on, after about 1 minute, you will get an error message.

To allow MyDVD to recognize and capture the video:

- a Click **OK** to close the error message.
- b Click **Done** to close the Capture window.
- c Press the **Power on** button on your video source.
- d Click **Capture**.
- e Click **Start Capturing**.

- For optimum quality when creating DVDs, use the Best setting (in the MyDVD Capture window) when capturing video clips. However, if you have limited disk space, Adaptec recommends that you choose the Better or Good capture setting. Refer to the *Getting Help* section of the *User's Guide* on the VideOh! CD for help estimating capture file size.
- If you are capturing video using the Best quality setting and see choppy images on the preview window, make sure you're connected to a USB 2.0 port, because Best quality capturing may exceed the bandwidth of USB 1.1.
- MyDVD may not be able to recognize footage from a damaged or degraded video tape.
- If there are gaps in your analog video tape, MyDVD stops capturing. To continue, start capturing a new clip after the gap. Gaps in video footage are often caused by stops, pauses, static, or unrecorded space in the original recording. They can also be caused by old, damaged, or deteriorated video tapes.
- Set your computer monitor's screen resolution to 1024 x 768 or higher for optimum viewing.
- If you are playing your video and it is not appearing on the MyDVD Main project window, make sure MyDVD is capturing from the correct device.

To check your device, go to the Capture Window (as shown in [Step 3 of *Capturing Your Video*](#)) and under Record Settings, click **Change**. Make sure **Adaptec USB Capture Device** is selected.

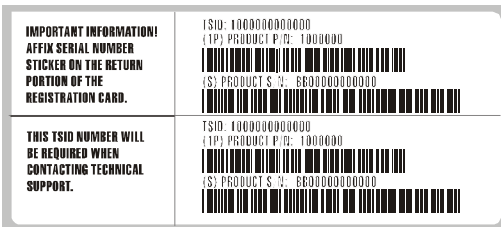
- To avoid choppy video in a captured file, especially a long video clip, users should disable any scanning background programs such as virus software or any CPU-loaded software.

Getting Help from Adaptec

If you have questions about installing or using your Adaptec product, check this document first—you will find answers to most of your questions here. If you need further assistance:

- Search the Adaptec Support Knowledgebase (ASK) at ask.adaptec.com for articles, troubleshooting tips, and frequently asked questions for your product.
- For support via Email, submit your question to Adaptec's Technical Support Specialists at ask.adaptec.com.
- To order Adaptec products, including accessories and cables, call +1 408-957-7274.

Before contacting Technical Support, you need your unique 12-digit TSID number. The TSID number is included in your package on two white, bar-coded labels, like the example below. Affix a TSID label to your AVC-2310 for safe-keeping.





Adaptec, Inc.
691 South Milpitas Boulevard
Milpitas, CA 95035 USA

©2003 Adaptec, Inc.
All rights reserved. Adaptec and the Adaptec logo
are trademarks of Adaptec, Inc. which may be
registered in some jurisdictions.

Part Number: 513547-06, Ver. AA, LB 04/03