



Adaptec Event Monitor Utility

User's Guide

Copyright

Copyright © 2013 PMC-Sierra, Inc. All rights reserved.

The information in this document is proprietary and confidential to PMC-Sierra, Inc., and for its customers' internal use. In any event, no part of this document may be reproduced or redistributed in any form without the express written consent of PMC-Sierra, Inc.

Trademarks

PMC, PMC-Sierra, and Adaptec are registered trademarks of PMC-Sierra, Inc. "Adaptec by PMC" is a trademark of PMC-Sierra, Inc. Other product and company names mentioned herein may be trademarks of their respective owners. For a complete list of PMC-Sierra trademarks, see www.pmc-sierra.com/legal.

Disclaimer

None of the information contained in this document constitutes an express or implied warranty by PMC-Sierra, Inc. as to the sufficiency, fitness or suitability for a particular purpose of any such information or the fitness, or suitability for a particular purpose, merchantability, performance, compatibility with other parts or systems, of any of the products of PMC-Sierra, Inc., or any portion thereof, referred to in this document. PMC-Sierra, Inc. expressly disclaims all representations and warranties of any kind regarding the contents or use of the information, including, but not limited to, express and implied warranties of accuracy, completeness, merchantability, fitness for a particular use, or non-infringement. In no event will PMC-Sierra, Inc. be liable for any direct, indirect, special, incidental or consequential damages, including, but not limited to, lost profits, lost business or lost data resulting from any use of or reliance upon the information, whether or not PMC-Sierra, Inc. has been advised of the possibility of such damage.

Patents

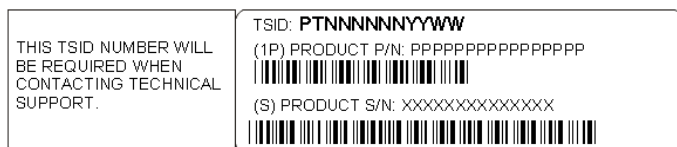
The technology discussed in this document may be protected by one or more patent grants.

Adaptec by PMC Customer Support

If you have questions about installing or using your Adaptec by PMC product, check this document first—you will find answers to most of your questions. If you need further assistance, use the support options listed below. To expedite your service, have your computer in front of you.

Technical Support Identification (TSID) Number

- Before contacting Technical Support, you need your product unique TSID number. The TSID number identifies your product and support status.
- The TSID number is included on a white, bar-coded label, like this example:



- It's recommended that you register your product so that you have easy access to your TSID when contacting Customer Support.

Note: The phone numbers below are subject to change. Please visit the Support section of www.adaptec.com for the most up to date contact information.

North America

- Visit our Web site at www.adaptec.com.
- Search the Adaptec Support Knowledgebase (ASK) at ask.adaptec.com for articles, troubleshooting tips, and frequently asked questions for your product.
- For support via e-mail, submit your question at ask.adaptec.com.
- To speak with a Technical Support Specialist, call +1 408 934 7274 or +49 89 4366 5544 or +44 845 266 8773.

Europe

- Visit our Web site at www.adaptec-europe.com.
- **German:** Call +49 89 43 66 55 22. For support via e-mail, submit your question at ask-de.adaptec.com.
- **French:** Call +49 89 43 66 55 33. For support via e-mail, submit your question at ask-fr.adaptec.com.
- **English:** Call +49 89 43 66 55 44. For support via e-mail, submit your question at ask.adaptec.com.

Japan

- Visit our Web site at www.adaptec.co.jp.
- Call +0066-3313-2601. For support via e-mail, submit your question at ask.adaptec.co.jp.

Australia

- Call +61-2-9503-1555.

Russia

- Visit our Web site at www.adaptec.com/ru-ru.
- Call +7 499 918 7200 or +49 89 4366 5555. For support via e-mail, submit your question at ask-ru.adaptec.com.

Software License Agreement

CAREFULLY READ THE FOLLOWING TERMS AND CONDITIONS. BY YOUR USE OF THE SOFTWARE INCLUDED WITH THIS PRODUCT, YOU AGREE TO BE BOUND BY THESE TERMS, CONDITIONS, AND REQUIREMENTS. IF YOU DO NOT AGREE TO THE LICENSE TERMS, CONDITIONS, AND REQUIREMENTS APPLICABLE TO THE SOFTWARE, YOU ARE NOT PERMITTED TO USE THE SOFTWARE AND MAY RETURN THE ENTIRE UNUSED HARDWARE PRODUCT FOR A FULL REFUND. THESE TERMS, CONDITIONS, AND REQUIREMENTS DO NOT APPLY TO ANY OPENSOURCE SOFTWARE, WHICH MAY BE DELIVERED TOGETHER WITH THE PMC-SIERRA PRODUCTS, EXCEPT FOR THE PROVISIONS SET FORTH IN SECTION 7 AND 9 BELOW.

In return for acquiring a license to use the PMC-Sierra software ("Software") and the related documentation, you agree to the following terms and conditions:

1. License. This Agreement grants you, the Licensee, a license to:
 - a. Use the Software on a single computer system or on multiple workstations, systems and servers which incorporate an PMC-Sierra Hardware product and may be accessed by multiple users from multiple locations. You may make as many installations of the Software as needed, but must restrict such installation only to systems, workstations or servers using an PMC-Sierra hardware product.
 - b. Make one copy of the Software in machine readable form solely for back-up purposes provided you reproduce PMC-Sierra's copyright notice and any proprietary legends.
2. Restrictions. You may not distribute copies of the Software to others. You may not post or otherwise make available the Software, or any portion thereof, in any form, on the Internet. You may not use the software in a computer service business, including in time sharing applications. The Software contains trade secrets and in order to protect them you may not decompile, reverse engineer, disassemble, or otherwise reduce the Software to a human perceivable form. YOU MAY NOT MODIFY, ADAPT, TRANSLATE, RENT, LEASE, LOAN, RESELL FOR PROFIT, DISTRIBUTE OR CREATE DERIVATIVE WORKS BASED UPON THE SOFTWARE OR ANY PART THEREOF.
3. Ownership. As Licensee, You own the media upon which the Software is recorded or fixed, but PMC-Sierra and its licensors retain title, ownership and intellectual property rights of the Software recorded on the original media and all subsequent copies of the Software, regardless of the form or media in which or on which the original and other copies may exist. This license is not a sale of the Software or any copy. The Software is copyrighted by, proprietary to and a trade secret of PMC-Sierra or its licensors. The Software is protected by the copyright laws of the United States and international copyright treaties.
4. Termination. This license is effective until terminated. This license will terminate automatically without notice if you fail to comply with any of the provisions. You may terminate the license at any time by destroying the Software (including the related documentation) together with all copies or modifications in any form. Upon termination you shall destroy all copies of the Software (including the related documentation), together with any partial copies.
5. Limited Warranty. PMC-Sierra and its Licensors warrant only that the media upon which the Software is furnished will be free from defects in material or workmanship under normal use and service for a period of thirty (30) days from the date of delivery to you. THE FOREGOING WARRANTY EXPRESSLY EXCLUDES ANY OPEN SOURCE SOFTWARE PROVIDED TO YOU WITH THE PMC-SIERRA SOFTWARE. PMC-SIERRA AND ITS LICENSORS DO NOT AND CANNOT WARRANT THE PERFORMANCE OR RESULTS YOU MAY OBTAIN BY USING THE SOFTWARE, OPEN SOURCE SOFTWARE OR DOCUMENTATION. EXCEPT FOR THE FOREGOING LIMITED WARRANTY, PMC-SIERRA AND ITS LICENSORS MAKE NO WARRANTIES, EXPRESSED OR IMPLIED, INCLUDING, BUT NOT LIMITED, AS TO NON-INFRINGEMENT OF THIRD PARTY RIGHTS, MERCHANTABILITY OR FITNESS FOR A PARTICULAR PURPOSE. Some states do not allow the exclusion of implied warranties or limitations on how long an implied warranty may last, so the above limitations may not apply to you. This warranty gives you specific legal rights and you may also have other rights which vary from state to state.
6. The entire liability of PMC-Sierra and its licensors, and your exclusive remedy for a breach of this warranty, shall be the replacement of any media not meeting the above limited warranty which is returned to PMC-Sierra; or if PMC-Sierra or its distributor is unable to deliver replacement media which is free from defects in materials or workmanship, you may terminate this Agreement by returning the Software and your money will be refunded.
7. THE FOREGOING STATES THE SOLE AND EXCLUSIVE REMEDIES PMC-SIERRA AND ITS LICENSORS WILL PROVIDE FOR BREACH OF WARRANTY.
8. Limitation of Liability. IN NO EVENT WILL PMC-SIERRA OR ITS LICENSORS BE LIABLE TO YOU FOR ANY INCIDENTAL, CONSEQUENTIAL OR INDIRECT DAMAGES, INCLUDING ANY LOST PROFITS, LOST SAVINGS, OR LOSS OF DATA, EVEN IF PMC-SIERRA OR A LICENSOR HAS BEEN ADVISED OF THE POSSIBILITY OF SUCH DAMAGES, OR FOR ANY CLAIM BY ANY OTHER PARTY. IN NO EVENT WILL PMC-SIERRA BE LIABLE UNDER THIS AGREEMENT FOR ANY AMOUNT IN EXCESS OF THE LICENSE FEES YOU PAID FOR THE SOFTWARE OR, IF THE SOFTWARE WAS FREE, IN AN AMOUNT IN EXCESS OF THE AMOUNT PAID BY YOU FOR THE HARDWARE SOLD IN CONJUNCTION WITH THE SOFTWARE. Some states do not allow the exclusion or limitation of special, incidental, or consequential damages, so the above limitation or exclusion may not apply to you.
9. Export. You acknowledge that the laws and regulations of the United States restrict the export and re-export of the Software and/or the Open Source Software. Further, you agree that you will not export or re-export the Software and/or the Open Source Software or media in any form without the appropriate United States and foreign government approval.
10. U.S. Government Restricted Rights. If the Software is acquired under the terms of a GSA contract, use, reproduction or disclosure is subject to the restrictions set forth in the applicable ADP Schedule contract. If the Software is acquired under the terms of a DoD or civilian agency contract, use, duplication or disclosure by the Government is subject to the restrictions of this license in accordance with 48 C.F.R. 12.212 of the Federal Acquisition Regulations and its successors and 48 C.F.R. 227.7202-1 of the DoD FAR Supplement and its successors.
11. Open Source Software. Certain programs distributed in conjunction with the Software may be distributed subject to third party licensing terms, including without limitation, the GNU General Public ("GPL") License available at: <http://www.gnu.org/licenses/gpl.txt> or by writing to the Free Software Foundation, Inc., 59 Temple Place, Suite 330, Boston, MA 02111-1307 USA. The source code for the programs licensed under the GPL is available to You, for a period of three (3) years from the date of first commercial distribution of the Software, upon request by contacting PMC-Sierra in writing at 1380 Bordeaux Drive, Sunnyvale, CA 94089, ATTN: Legal Department, Open Source Request. PMC-Sierra will only charge you the actual cost of the medium used to distribute the source code for these programs and the cost of shipping. More details regarding the open source software and the applicable open source licenses are available in the README files.
12. Export Compliance. Each party agrees that the Software is subject to the U.S. Export Administration Act and Export Administration Regulations, as well as applicable import and export regulations of the countries in which each party transacts business. Each party shall comply with such laws and regulations, as well as all other laws and regulations applicable to the Software. Each party agrees that it will not export, re-export, transfer or divert any of the Software to any country for which United States' laws or regulations require an export license or other governmental approval, without first obtaining such license or approval, nor will each party export, re-export, transfer or divert any of the Software to any restricted place or party in accordance with U.S. export regulations.

13. General. You agree this is the complete agreement concerning this license. In order to amend this license, a writing executed by both parties is required. You assume full responsibility for the legal and responsible use of the Software. This license shall be governed by California law as such law applies to agreements between California residents entered into and to be performed within California, except as governed by Federal law. Should any provision of this license be declared unenforceable in any jurisdiction, then such provision shall be deemed to be severable from this license and shall not affect the remainder hereof. All rights in the Software not specifically granted in this license are reserved by PMC-Sierra.

Should you have any questions concerning this license, contact:

PMC-Sierra, Inc.
Legal Department
1380 Bordeaux Drive
Sunnyvale, CA 94089
(408) 239-8000

Using the Adaptec Event Monitor Utility

Contents...

Overview	6
Installing Adaptec Event Monitor	7
Stopping and Starting the Adaptec Event Monitor Service.....	10
Configuring Adaptec Event Monitor.....	11
Adaptec Event Monitor Log Files	11
Frequently Asked Questions	12
More Information	12

Overview

The Adaptec Event Monitor Utility is a software application that monitors and manages the Adaptec by PMC storage controllers installed on your system. Its job is to monitor system health, send notifications, and manage task schedules and other on-going processes. It sends notices when tasks are completed successfully, such as the creation of a logical drive, and sounds an alarm when errors or failures occur.

The Adaptec Event Monitor Utility runs on Windows and Linux systems (see [System Requirements on page 7](#)). Once it is installed, it runs in the background with no user intervention.

When you install the Adaptec Event Monitor Utility, the Adaptec Command Line Interface tool, ARCCONF, is installed automatically. The CLI tool allows you to build and manage your storage space; create logical drives; add redundancy to protect your data; check status; recover from a failed physical device; rebuild logical drives; and more. See [More Information on page 12](#) for related documentation.

Installing Adaptec Event Monitor

The Adaptec Event Monitor Utility is distributed on a single Installation CD. You can install the Adaptec Event Monitor Utility using the interactive Installation wizard. Or you can perform a “silent” installation from the command line without messages or user interaction. The silent installation method is suitable for scripted or “batch” installations across multiple machines.

You must install the Adaptec Event Monitor Utility on every system that will be part of your storage space.

System Requirements

To install the Adaptec Event Monitor Utility, each machine must meet these requirements:

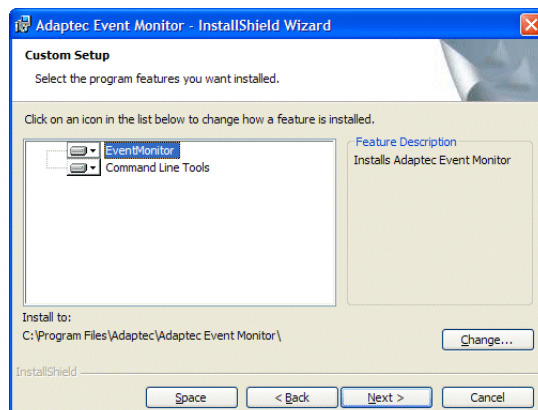
- 20MB of free disk space
- CD-ROM drive or DVD-ROM drive
- Adaptec by PMC storage controller
- One of these operating systems:
 - Microsoft Windows Server 2012, 2008, 2008 R2, 2003, 2003 R2 (32-bit or 64-bit)
 - Red Hat Enterprise Linux 6.3, 5.9 (32-bit or 64-bit)
 - CentOS 6.3, 5.9 (32-bit or 64-bit)

Installing on Windows

Note: You need administrator privileges to install the Adaptec Event Monitor Utility. For details on verifying privileges, refer to your operating system documentation.

To install the Adaptec Event Monitor Utility on Windows systems:

- 1 Insert the Adaptec Event Monitor Installation CD.
The Installation wizard opens automatically. (If it does not open, browse to the CD in Windows Explorer, then click **Autorun**.)
- 2 Click **Next** to begin the installation, click **I accept the terms...**, then click **Next**.
- 3 Select **EventMonitor**, accept the default installation directory or click **Change...** to select a different installation directory; then click **Next**.



Note: To check disk space availability, click **Space**, review disk space usage, then click **OK**.

- 4 Click **Install**, then click **Finish**.
- 5 Repeat these steps to install the Adaptec Event Monitor Utility on every Windows system that will be part of your storage space.

Performing a Silent Windows Installation

A silent installation uses command line parameters to complete an installation without messages or user interaction.

You will need the Adaptec Event Monitor Installation CD to complete this task.

To complete a silent Windows installation:

- 1 Insert the Adaptec Event Monitor Installation CD into your CD (or DVD) drive.
- 2 Open a command prompt window and change to the CD root directory.
- 3 Run the silent installation from the command line using the 32-bit or 64-bit installer program, as appropriate: `EventMonitorInstaller_x64.exe` or `EventMonitorInstaller_x86.exe`.

For a silent installation, the installer has the following form:

```
EventMonitorInstaller_x64.exe [ INSTALLDIR=<path> ] [ LOGDIR=<path> ]
[ ADDLOCAL=<properties> ]
```

See [Command Line Properties on page 9](#) for a description of the command line options.

After a minute or two, the silent installation should be complete. You may need to reboot the system if instructed to do so in the install log; see [Step 4](#).

- 4 Check the install log, at <LOGDIR>\eventmonitor_install.log, to verify that the installation completed successfully. The exit codes, shown below, indicate if you need to take further action to complete the installation.

Code	Value	Meaning
SUCCESS	0	The installation was successful, no reboot is required.
FAILURE_GENERAL	1	The installation was not successful.
SUCCESS_REBOOT	2	The installation was successful, but a reboot is required.
SUCCESS_NOT_REQUIRED	3	Required hardware not present, the software is up-to-date, or there is nothing to install.

Note: For more information about the success or failure of the installation, check the detailed installation log at <LOGDIR>\adaptec.log. If the installation failed, you will find detailed information to help you diagnose the problem.

- 5 Repeat these steps to install the Adaptec Event Monitor Utility on every Windows system that will be part of your storage space.

Command Line Properties

You may include one or more of the following properties on the command line. All command line properties are optional.

Property	Values
INSTALLDIR (Optional)	Specifies the installation path. For example: INSTALLDIR=C:\Adaptec\EventMon Note: If you do not set the installation path, the installer uses the following default path: C:\Program Files\Adaptec\Adaptec Event Monitor
LOGDIR (Optional)	Specifies the installation log path. For example: LOGDIR=C:\Adaptec\EventMon\InstallLogs Note: If you do not set the installation log path, the installer uses the following default path: C:\PMCS\Logs
ADDLOCAL (Optional)	Note: Use commas to separate multiple values. <ul style="list-style-type: none"> • ALL—Installs all of the following features. If you specify ALL, do not also specify any of the following values. • EventMonitor—Installs the Adaptec Event Monitor. • CLITools—Installs the Command Line Interface tool (ARCCONF).

Example Command Line Installations

- To install the Adaptec Event Monitor, CLI tools (ARCCONF), and installation logs in the default location:

```
EventMonitorInstaller_x64.exe
```

- To install the Adaptec Event Monitor, CLI tools, and installation logs to a different installation path:

```
EventMonitorInstaller_x64.exe INSTALLDIR=C:\Adaptec\EventMon  
LOGDIR=C:\Adaptec\EventMon\InstallLogs
```

- To install the Adaptec Event Monitor and CLI tools to the default location and the installation logs to a different installation path:

```
EventMonitorInstaller_x64.exe LOGDIR="C:\Program Files\Adaptec\Adaptec Event  
Monitor\InstallLogs"
```

Note: Be sure to enclose the installation path in double quotes if the pathname includes spaces (as in the example above). Do *not* to include a trailing \ on the leaf directory, however, for example `InstallLogs\`; it will be interpreted as an escape sequence for the outside quote.

- To install just the CLI tools on a 32-bit Windows system:

```
EventMonitorInstaller_x86.exe ADDLOCAL=CliTools
```

Installing on Linux

For Linux, the Adaptec Event Monitor package consists of a RPM file. You can install the RPM package by double clicking the file in a GUI interface. Alternatively, run the RPM command from the Linux shell:

```
rpm -ivh EventMonitor-1.02-20425.x86_64.rpm (64-bit)
```

```
rpm -ivh EventMonitor-1.02-20425.i386.rpm (32-bit)
```

Once the RPM is installed, the files are stored under /usr/Adaptec_Event_Monitor. This directory also includes the Adaptec Command Line Utility ARCCONF, which allows you to configure your RAID storage. The installation creates a user process called 'EventMonitor', which runs on the system that will monitor the Adaptec storage controller for events.

Using the Adaptec Event Monitor with a Firewall

If your system or network includes a firewall, you must unblock the following ports:

- 8003 (TCP)
- 34580 (TCP)
- 34570 to 34579 (TCP)
- 34570 (UDP)
- 34577 to 34580 (UDP)

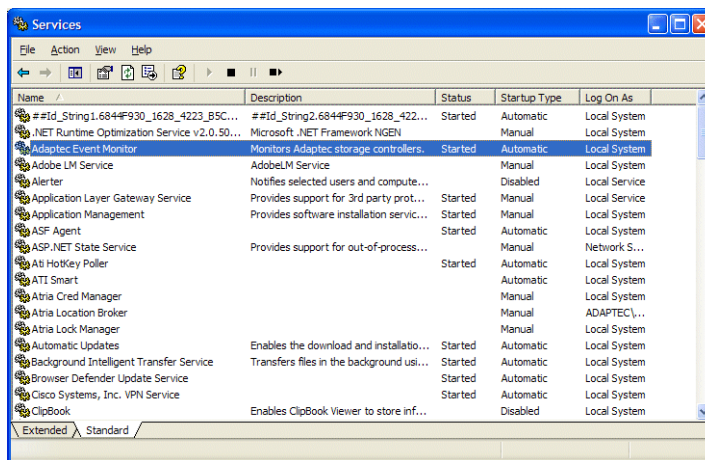
For details on unblocking ports, refer to your operating system documentation.

Stopping and Starting the Adaptec Event Monitor Service

When you complete a Windows or Linux installation, the Adaptec Event Monitor service starts automatically.

Stopping and Starting the Service on Windows

To stop the service, restart the service, or disable the service, use the services.msc program (Administrative Tools) in the Windows Control Panel. The service name, highlighted in the figure below, is Adaptec Event Monitor.



Stopping and Starting the Service on Linux

To stop and start the 'EventMonitor' process on a Linux system, use the following command:

```
/usr/Adaptec_Event_Monitor/EventMonitorService <start | stop>
```

Configuring Adaptec Event Monitor

You can set the following property values in the Adaptec Event Monitor configuration file, `NRMConfig.ini`, to control its behavior:

- **nrm.eventQueueSize**—the number of events to store before they are posted to the log files. The default is 200:
`nrm.eventQueueSize=200`
- **nrm.debugMask**—the level of debug message output. The following values are supported:
`nrm.debugMask=0` ; normal output. Only series problems are logged (default)
`nrm.debugMask=1` ; normal output + events logged to `NRMEvents.log`
`nrm.debugMask=2` ; full debug output
- **agent.OSLoggingLevel**—the operating system event logging level. The following values are supported:
`agent.OSLoggingLevel=0` ; no event logging
`agent.OSLoggingLevel=1` ; error events only
`agent.OSLoggingLevel=2` ; error and warning events
`agent.OSLoggingLevel=3` ; error, warning, and informational events (default)
- **agent.alarm**—enable or disable the audible alarm. The following values are supported:
`agent.alarm=on` ; warning and informational events trigger the alarm (default)
`agent.alarm=off` ; alarm disabled

Note: The property value is not case-sensitive.

See the `NRMConfig.ini` file, in the installation directory, for a complete list of values for each property. See the next section for more on event logging.

Adaptec Event Monitor Log Files

Windows Log Files

The Adaptec Event Monitor logs events to the Windows Event Viewer (the operating system event logging utility) and to the Event Monitor log files. The log files are available at the default log path for an interactive installation (`C:\PMCS\Logs`), or the `<LOGDIR>` directory, for a silent installation. Events are logged to `NRMFSAEvents.log` for error, warning, and informational events, and `NRMFSADebug.log` for debug messages.

Linux Log Files

The Adaptec Event Monitor logs events to the Syslogs (`/var/log/messages`) and to the Event Monitor log files. The log files are located under the root directory `/`. Events are logged to `NRMFSAEvents.log` for error, warning, and informational events, and `NRMFSADebug.log` for debug messages.

Frequently Asked Questions

- 1 Can I install Adaptec Event Monitor if I already have maxView Storage Manager installed?
No.

- 2 How do I filter out events from Adaptec Event Monitor for Windows?

In Windows System Logs, click **Filter Current Log**. You will see 'Adaptec Event Monitor' in the Event Sources list if Event Monitor is running on the system. Select **Adaptec Event Monitor** from the list of Event Sources, then click **OK**.

- 3 How do I filter out events from Adaptec Event Monitor for Linux?

Type this command:

```
grep /var/log/messages "Adaptec Event Monitor"
```

- 4 What event levels does Adaptec Event Monitor report?

Event Monitor reports three event levels in the system log: Warning, Error, Information.

- 5 What is the format of the events under Linux syslogs?

The events under Linux syslogs have this format:

```
Adaptec Event Monitor: INF | WRN | ERR: [Event Code] Event Description
```

More Information

For more information about the Adaptec Event Monitor Utility, refer to these documents:

- *Adaptec Command Line Utility User's Guide*—PDF file located on the Installation CD. It provides complete information about how to use the ARCCONF command line tool to manage your Adaptec storage controller.



PMC-Sierra, Inc.
1380 Bordeaux Drive
Sunnyvale, CA 94089 USA

© Copyright PMC-Sierra, Inc. 2013
All rights reserved. Adaptec and the Adaptec by PMC logo
are trademarks of PMC-Sierra, Inc.